

Map 1 of 37

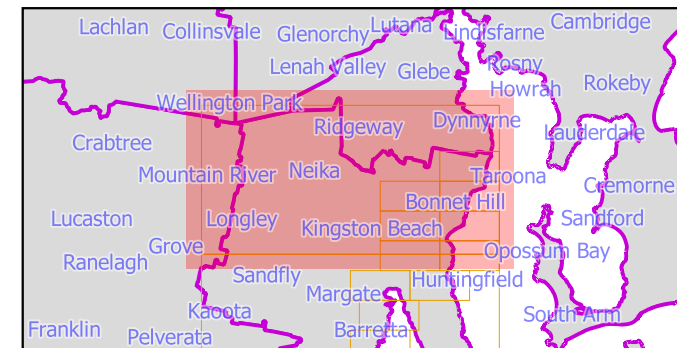
- | | |
|------------------------------------|--------------|
| Coastal Erosion Hazard Code | Land parcels |
| Coastal erosion investigation area | Land parcels |
| Low coastal erosion hazard | LGA Boundary |
| Medium coastal erosion hazard | |
| High coastal erosion hazard | |

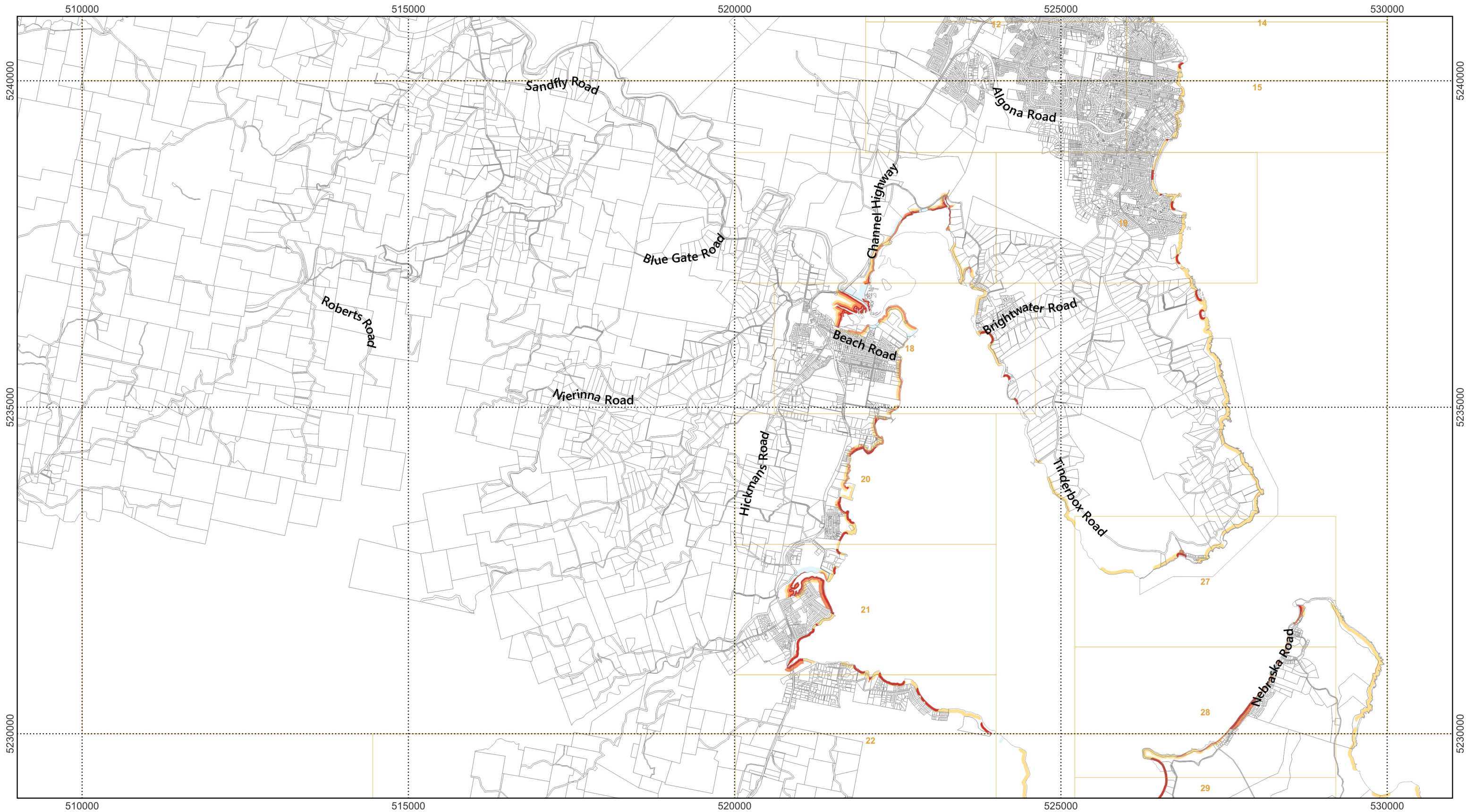


0 500 1,000 1,500 2,000 2,500 m



Scale: 1:55000 when printed at A3
 Coordinate system: GDA94 MGA Zone 55
 Planning data from Kingborough Council
 Base topographic data from the LIST © State of Tasmania
 Print Date: 6.9.2024 Cadastre Date: 20.8.2024





Map 2 of 37

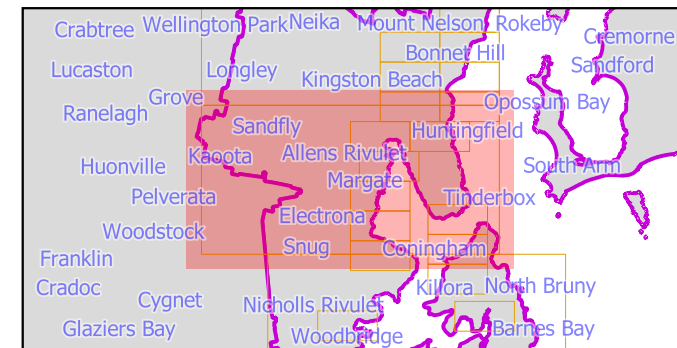


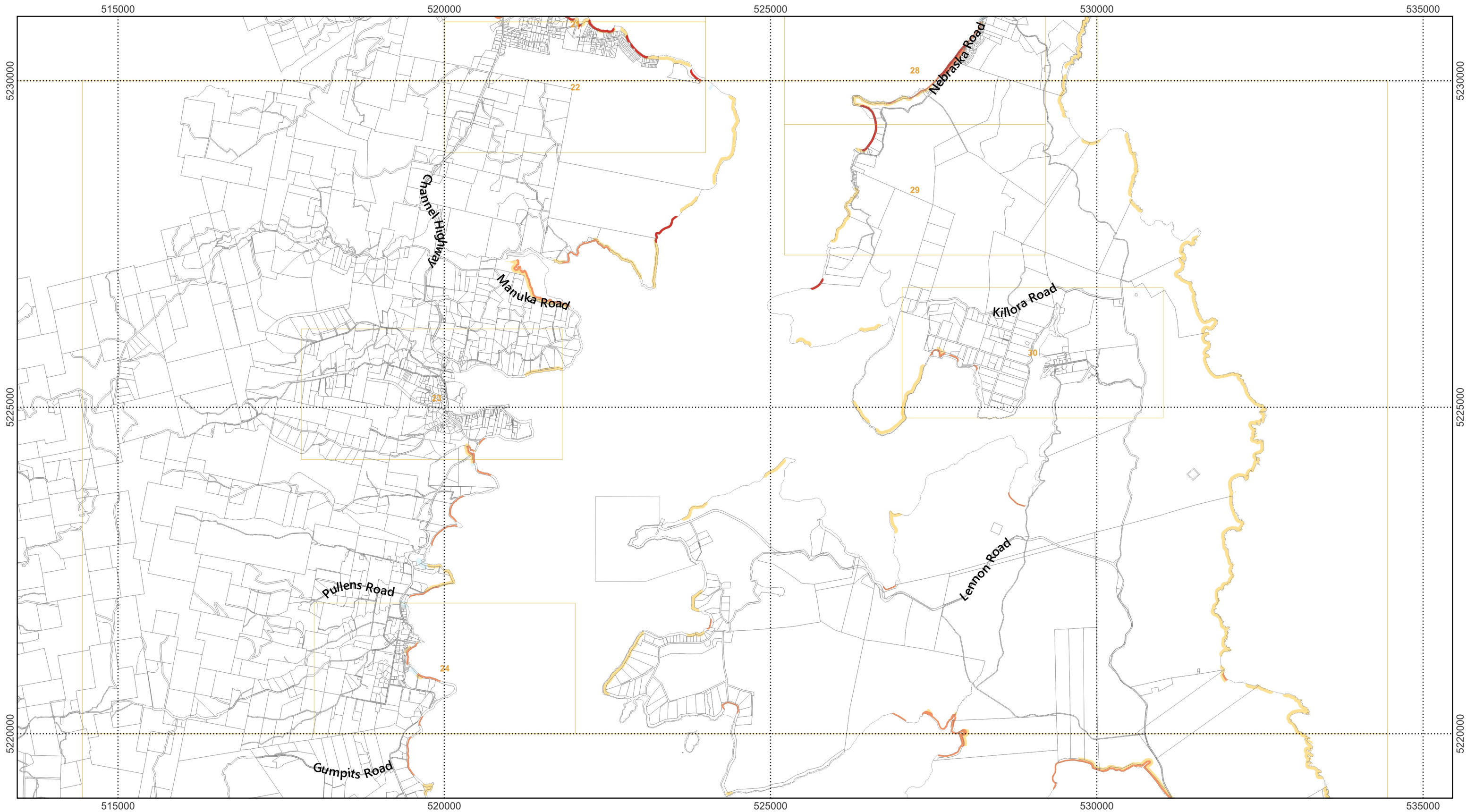
0 500 1,000 1,500 2,000 2,500 m



Scale: 1:55000 when printed at A3
 Coordinate system: GDA94 MGA Zone 55
 Planning data from Kingborough Council
 Base topographic data from the LIST © State of Tasmania
 Print Date: 6.9.2024 Cadastre Date: 20.8.2024

Coastal Erosion Hazard Code	Land parcels
Coastal erosion investigation area	LGA Boundary
Low coastal erosion hazard	
Medium coastal erosion hazard	
High coastal erosion hazard	





Map 3 of 37

Coastal Erosion Hazard Code

- Coastal erosion investigation area
- Low coastal erosion hazard
- Medium coastal erosion hazard
- High coastal erosion hazard

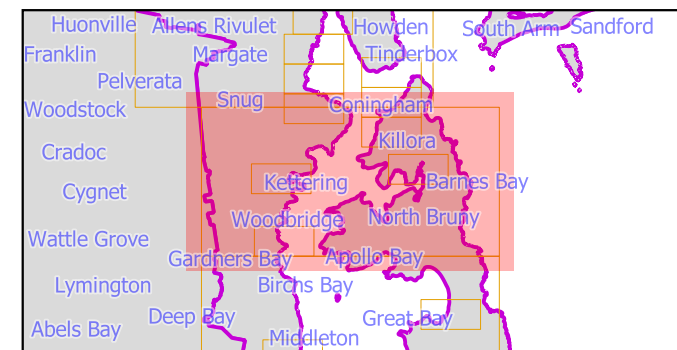
- Land parcels
- LGA Boundary

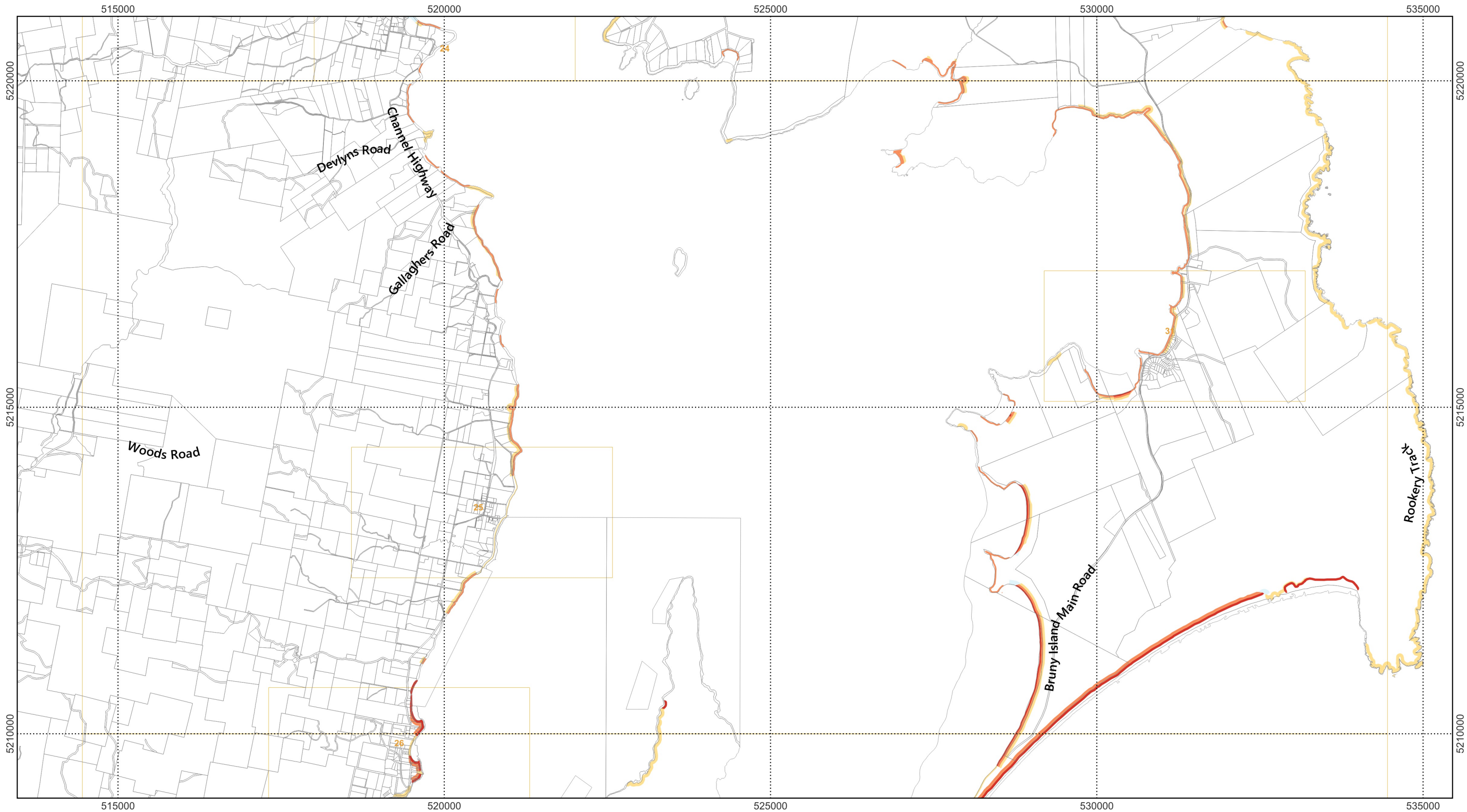


0 500 1,000 1,500 2,000 2,500 m

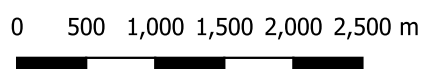


Scale: 1:55000 when printed at A3
 Coordinate system: GDA94 MGA Zone 55
 Planning data from Kingborough Council
 Base topographic data from the LIST © State of Tasmania
 Print Date: 6.9.2024 Cadastre Date: 20.8.2024



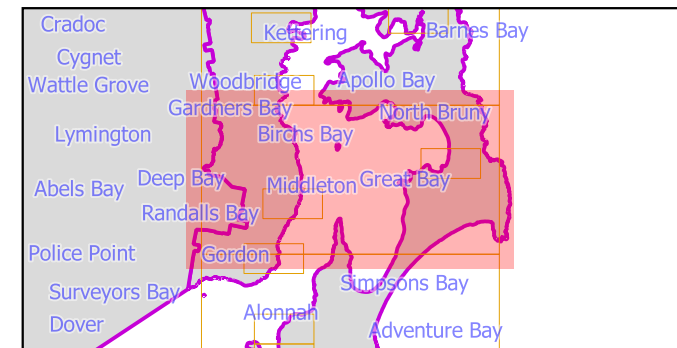


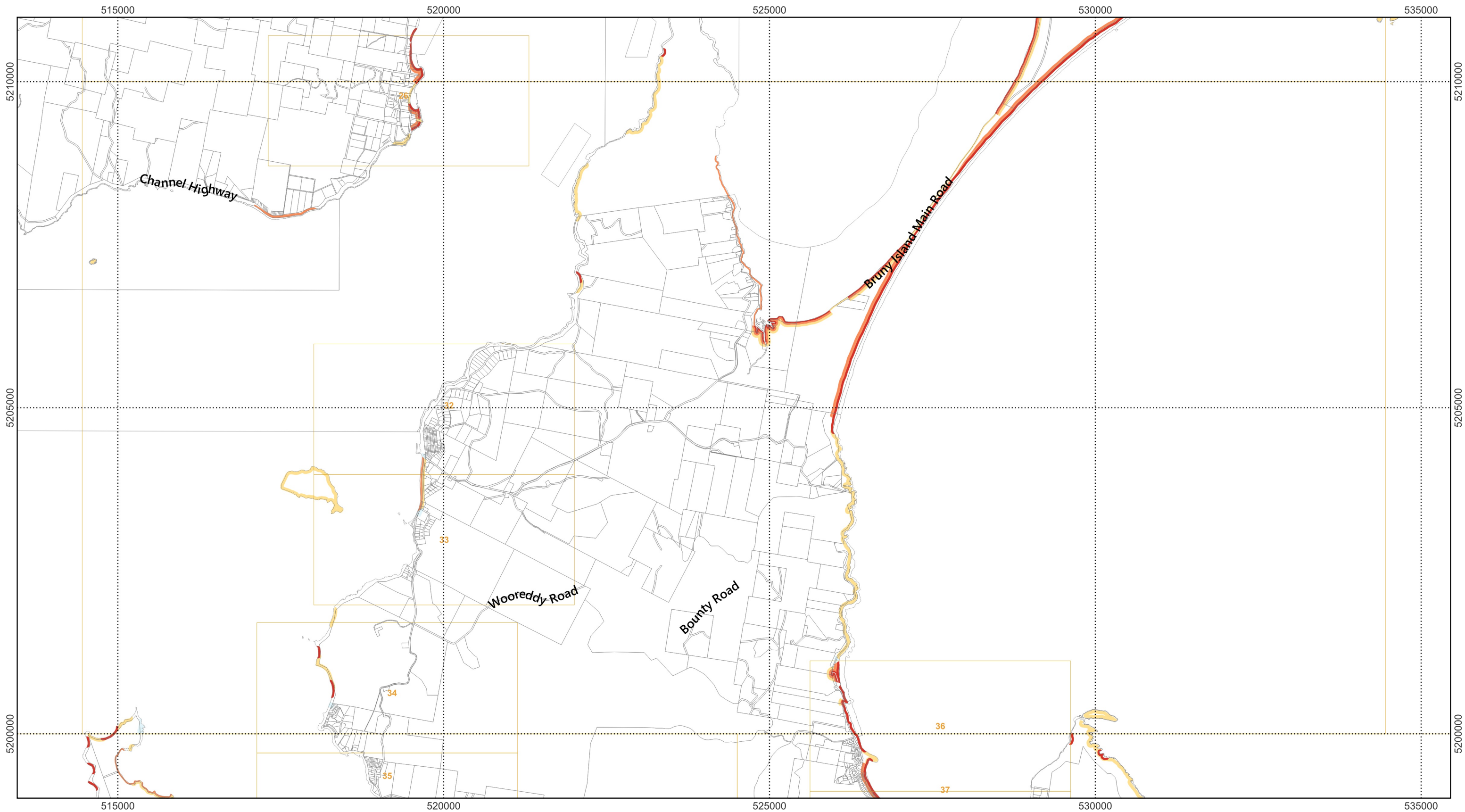
Map 4 of 37



Scale: 1:55000 when printed at A3
 Coordinate system: GDA94 MGA Zone 55
 Planning data from Kingborough Council
 Base topographic data from the LIST © State of Tasmania
 Print Date: 6.9.2024 Cadastre Date: 20.8.2024

Coastal Erosion Hazard Code		Land parcels
	Coastal erosion investigation area	
	Low coastal erosion hazard	
	Medium coastal erosion hazard	
	High coastal erosion hazard	





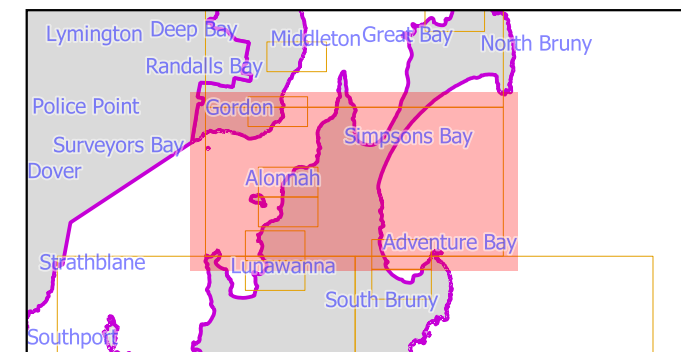
Coastal Erosion Hazard Code	Land parcels
Coastal erosion investigation area	LGA Boundary
Low coastal erosion hazard	
Medium coastal erosion hazard	
High coastal erosion hazard	

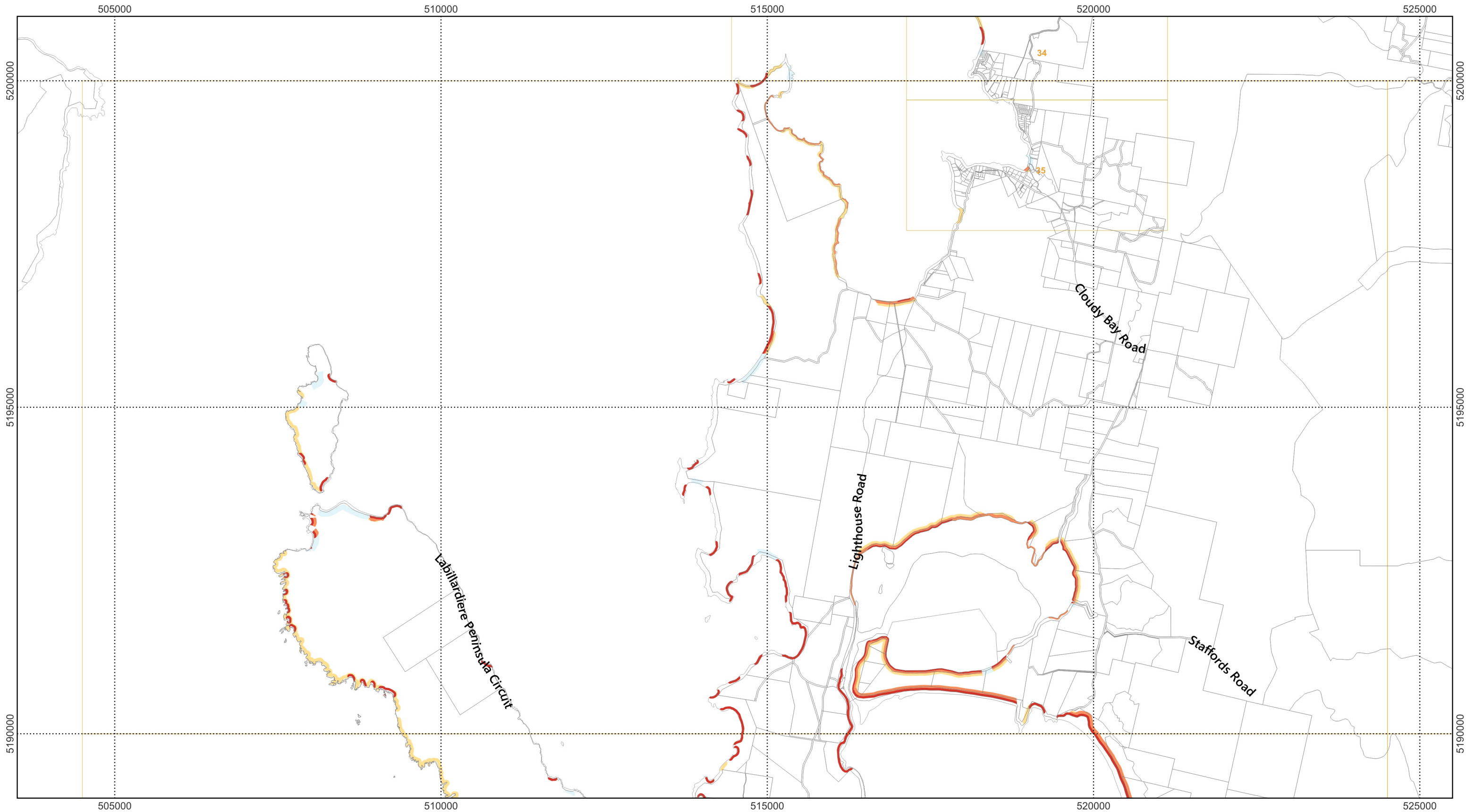


Map 5 of 37
 0 500 1,000 1,500 2,000 2,500 m



Scale: 1:55000 when printed at A3
 Coordinate system: GDA94 MGA Zone 55
 Planning data from Kingborough Council
 Base topographic data from the LIST © State of Tasmania
 Print Date: 6.9.2024 Cadastre Date: 20.8.2024





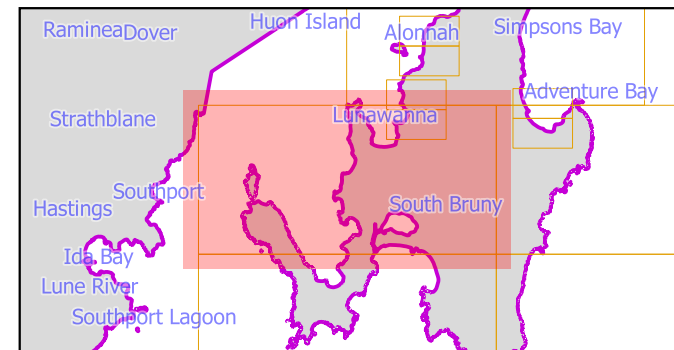
Coastal Erosion Hazard Code	Land parcels
Coastal erosion investigation area	LGA Boundary
Low coastal erosion hazard	
Medium coastal erosion hazard	
High coastal erosion hazard	

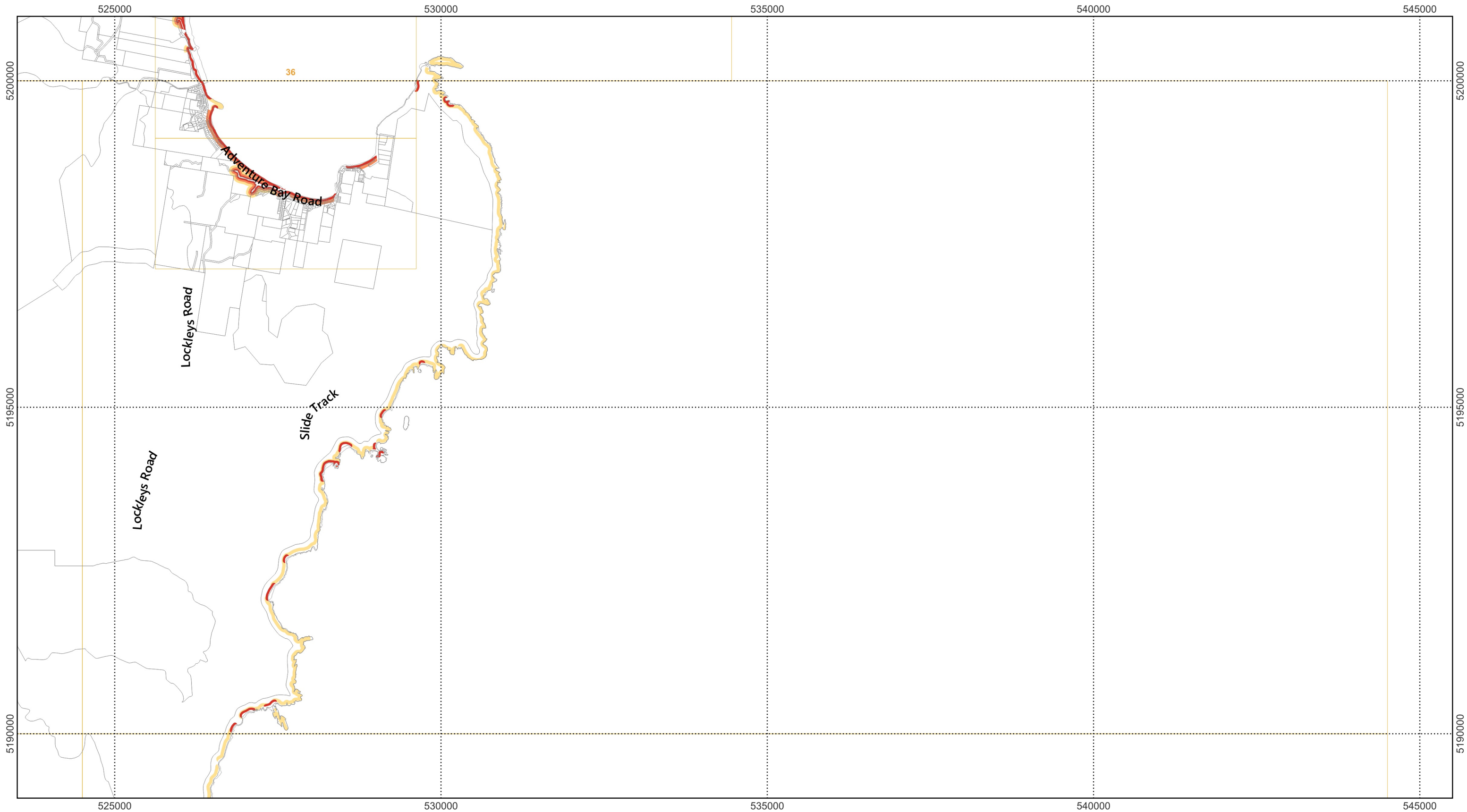


Map 6 of 37
 0 500 1,000 1,500 2,000 2,500 m

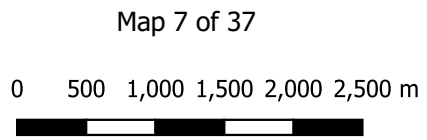


Scale: 1:55000 when printed at A3
 Coordinate system: GDA94 MGA Zone 55
 Planning data from Kingborough Council
 Base topographic data from the LIST © State of Tasmania
 Print Date: 6.9.2024 Cadastre Date: 20.8.2024

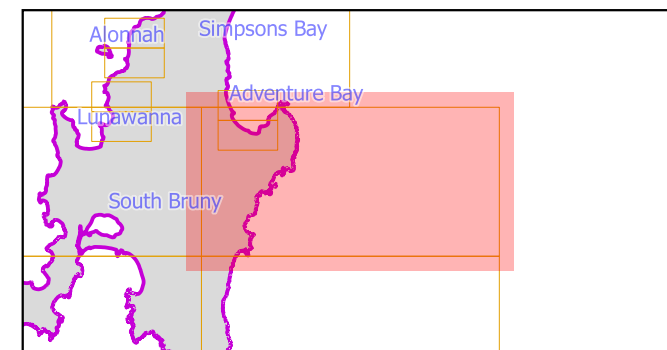


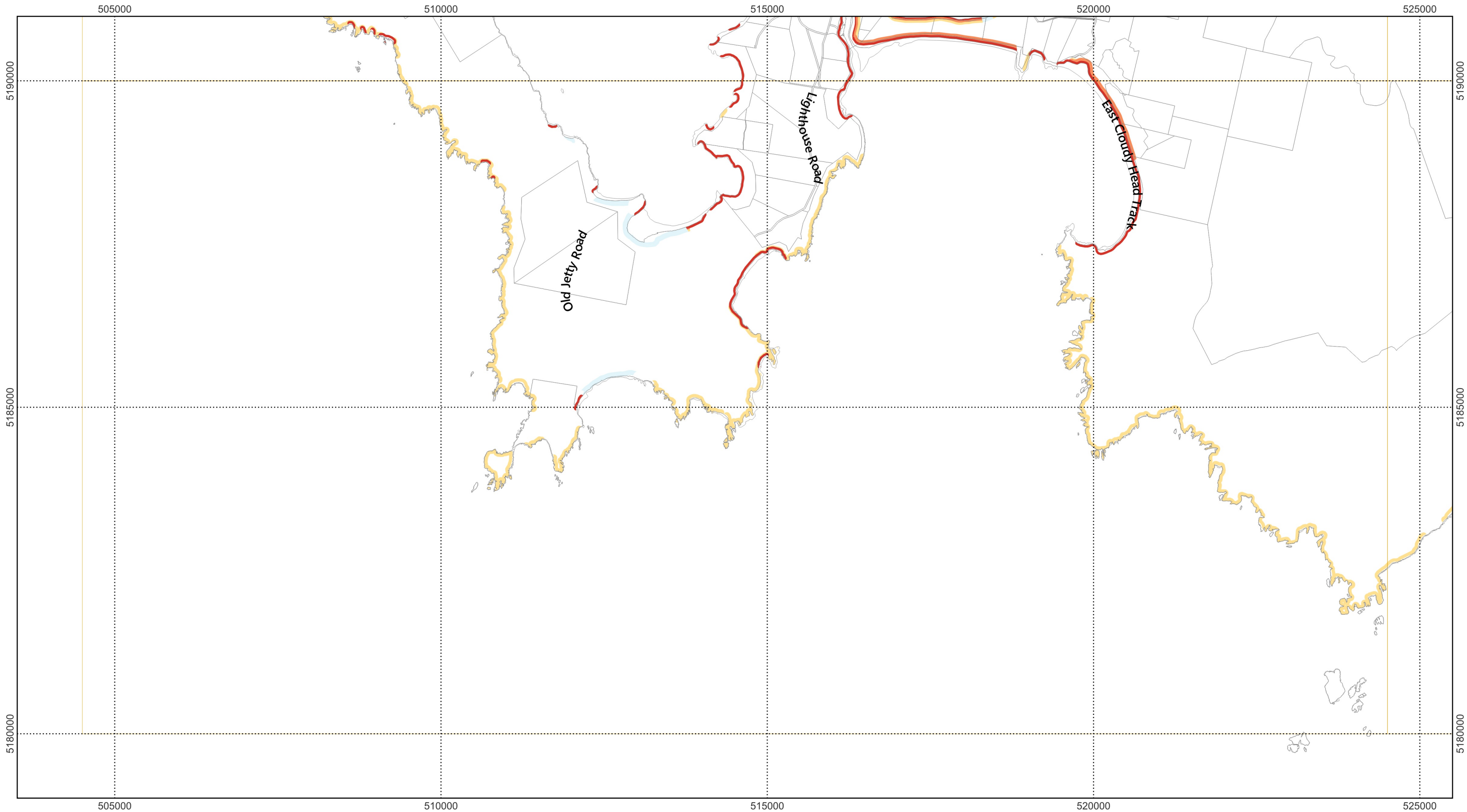


Coastal Erosion Hazard Code		Land parcels
	Coastal erosion investigation area	LGA Boundary
	Low coastal erosion hazard	
	Medium coastal erosion hazard	
	High coastal erosion hazard	

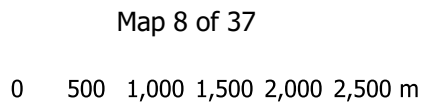


Scale: 1:55000 when printed at A3
 Coordinate system: GDA94 MGA Zone 55
 Planning data from Kingborough Council
 Base topographic data from the LIST © State of Tasmania
 Print Date: 6.9.2024 Cadastre Date: 20.8.2024

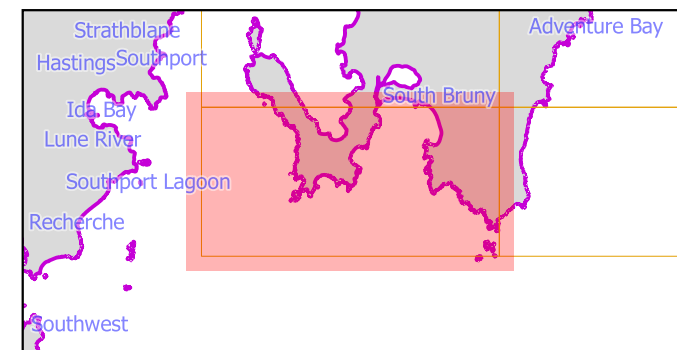


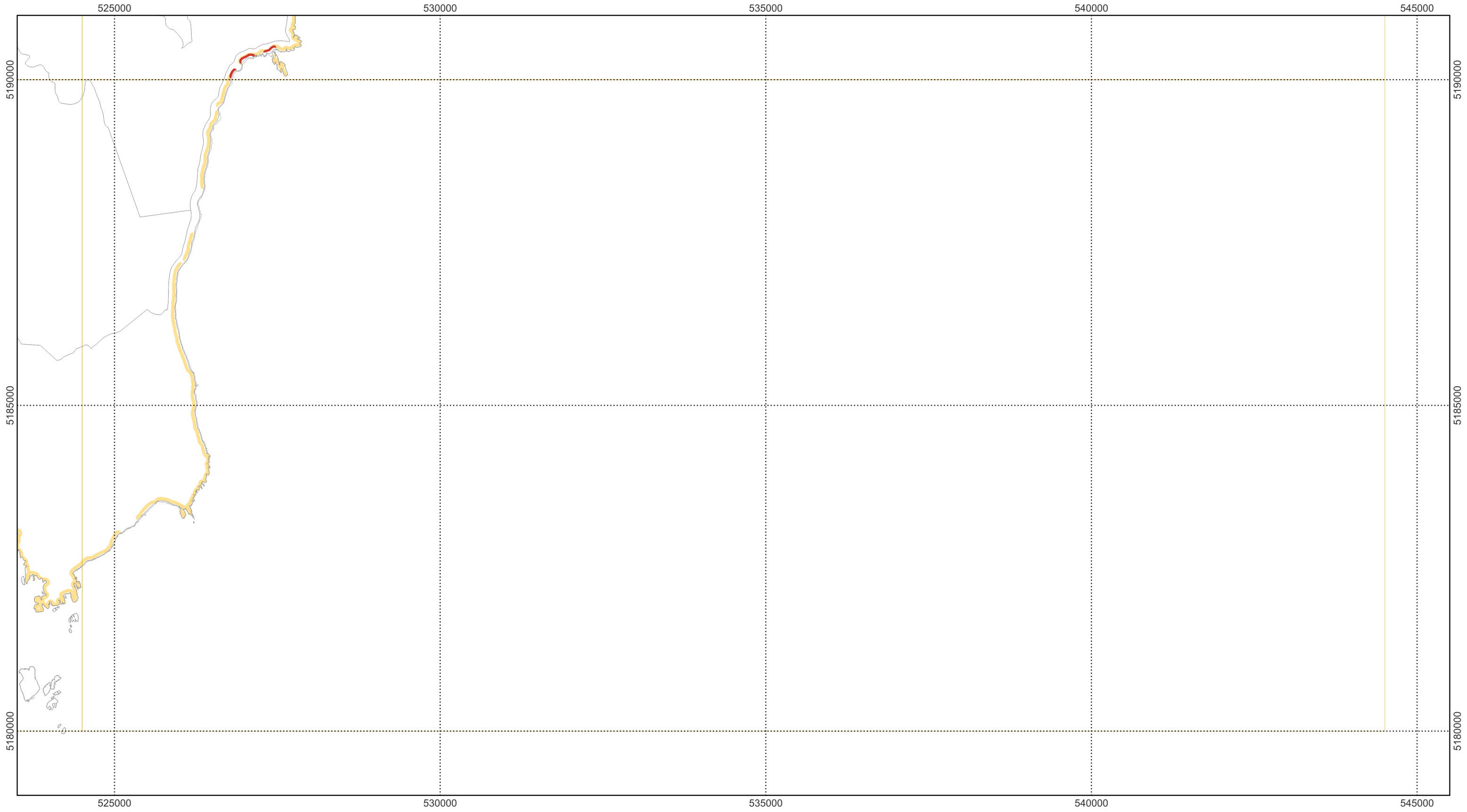


Coastal Erosion Hazard Code	Land parcels
Coastal erosion investigation area	Land parcels
Low coastal erosion hazard	LGA Boundary
Medium coastal erosion hazard	
High coastal erosion hazard	



Scale: 1:55000 when printed at A3
 Coordinate system: GDA94 MGA Zone 55
 Planning data from Kingborough Council
 Base topographic data from the LIST © State of Tasmania
 Print Date: 6.9.2024 Cadastre Date: 20.8.2024



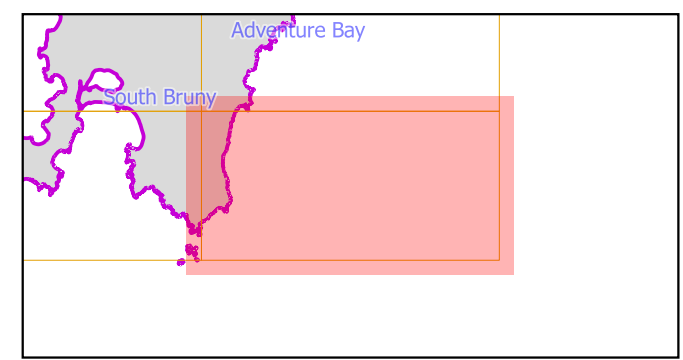


Coastal Erosion Hazard Code	Land parcels
Coastal erosion investigation area	LGA Boundary
Low coastal erosion hazard	
Medium coastal erosion hazard	
High coastal erosion hazard	

Map 9 of 37

0 500 1,000 1,500 2,000 2,500 m

Scale: 1:55000 when printed at A3
Coordinate system: GDA94 MGA Zone 55
Planning data from Kingborough Council
Base topographic data from the LIST © State of Tasmania
Print Date: 6.9.2024 Cadastre Date: 20.8.2024



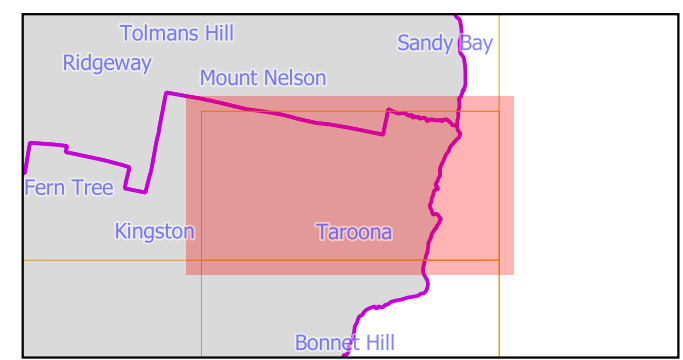


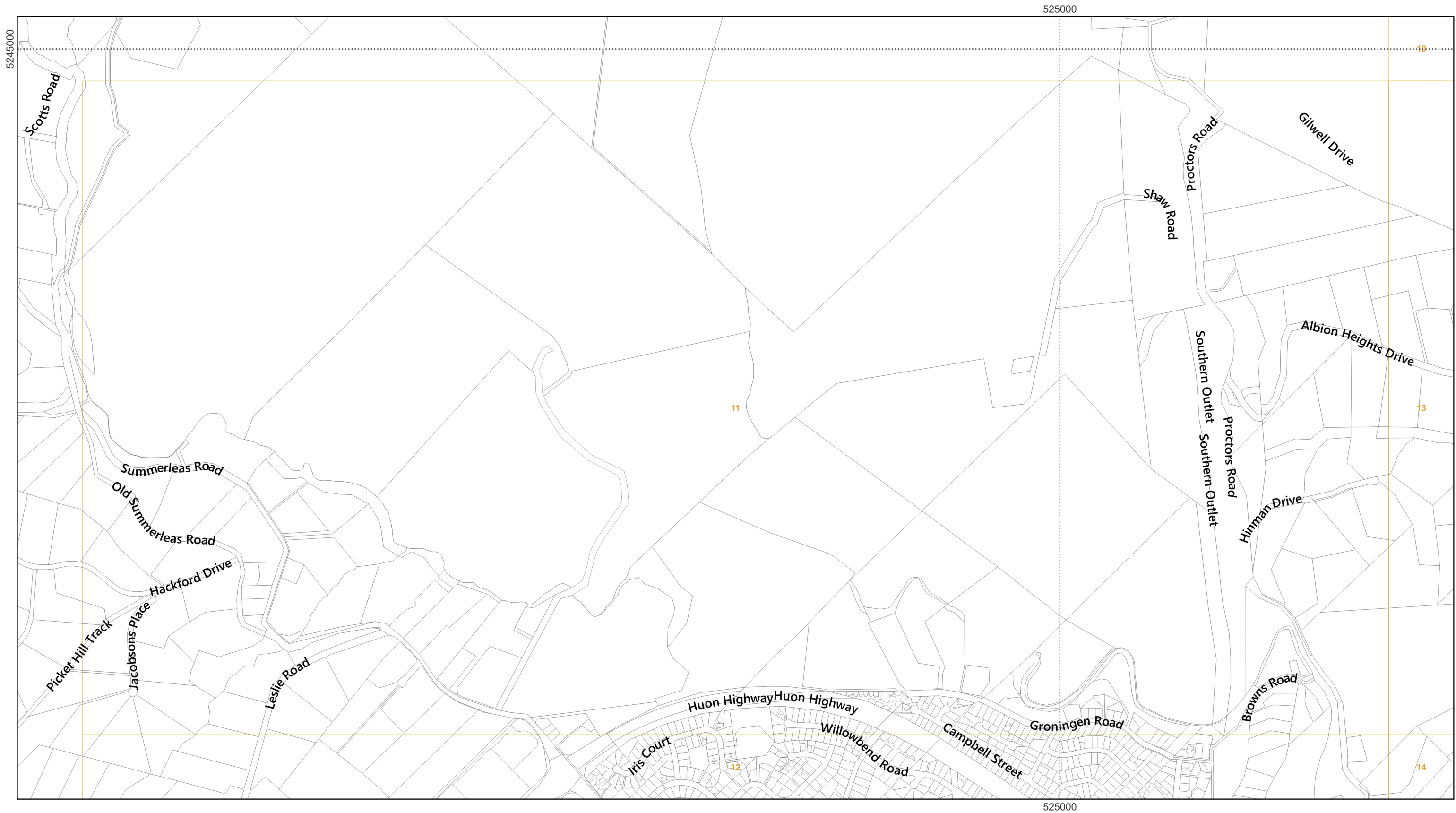
Coastal Erosion Hazard Code	Land parcels
Coastal erosion investigation area	LGA Boundary
Low coastal erosion hazard	
Medium coastal erosion hazard	
High coastal erosion hazard	

Map 10 of 37

0 100 200 300 400 500 m

Scale: 1:11000 when printed at A3
 Coordinate system: GDA94 MGA Zone 55
 Planning data from Kingborough Council
 Base topographic data from the LIST © State of Tasmania
 Print Date: 6.9.2024 Cadastre Date: 20.8.2024



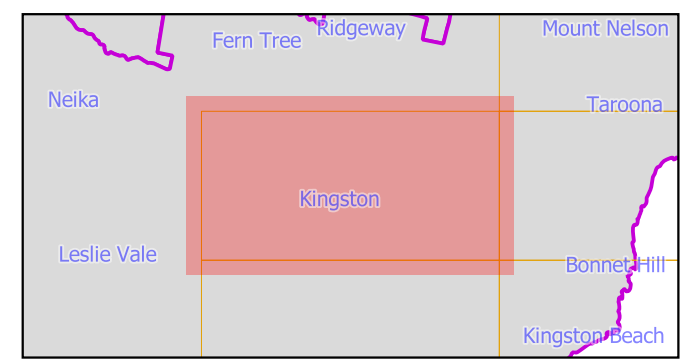


Coastal Erosion Hazard Code	Land parcels
Coastal erosion investigation area	LGA Boundary
Low coastal erosion hazard	
Medium coastal erosion hazard	
High coastal erosion hazard	

Map 11 of 37

0 100 200 300 400 500 m

Scale: 1:11000 when printed at A3
 Coordinate system: GDA94 MGA Zone 55
 Planning data from Kingborough Council
 Base topographic data from the LIST © State of Tasmania
 Print Date: 6.9.2024 Cadastre Date: 20.8.2024



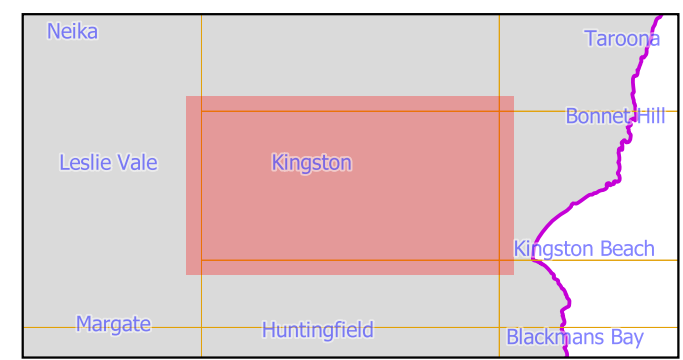


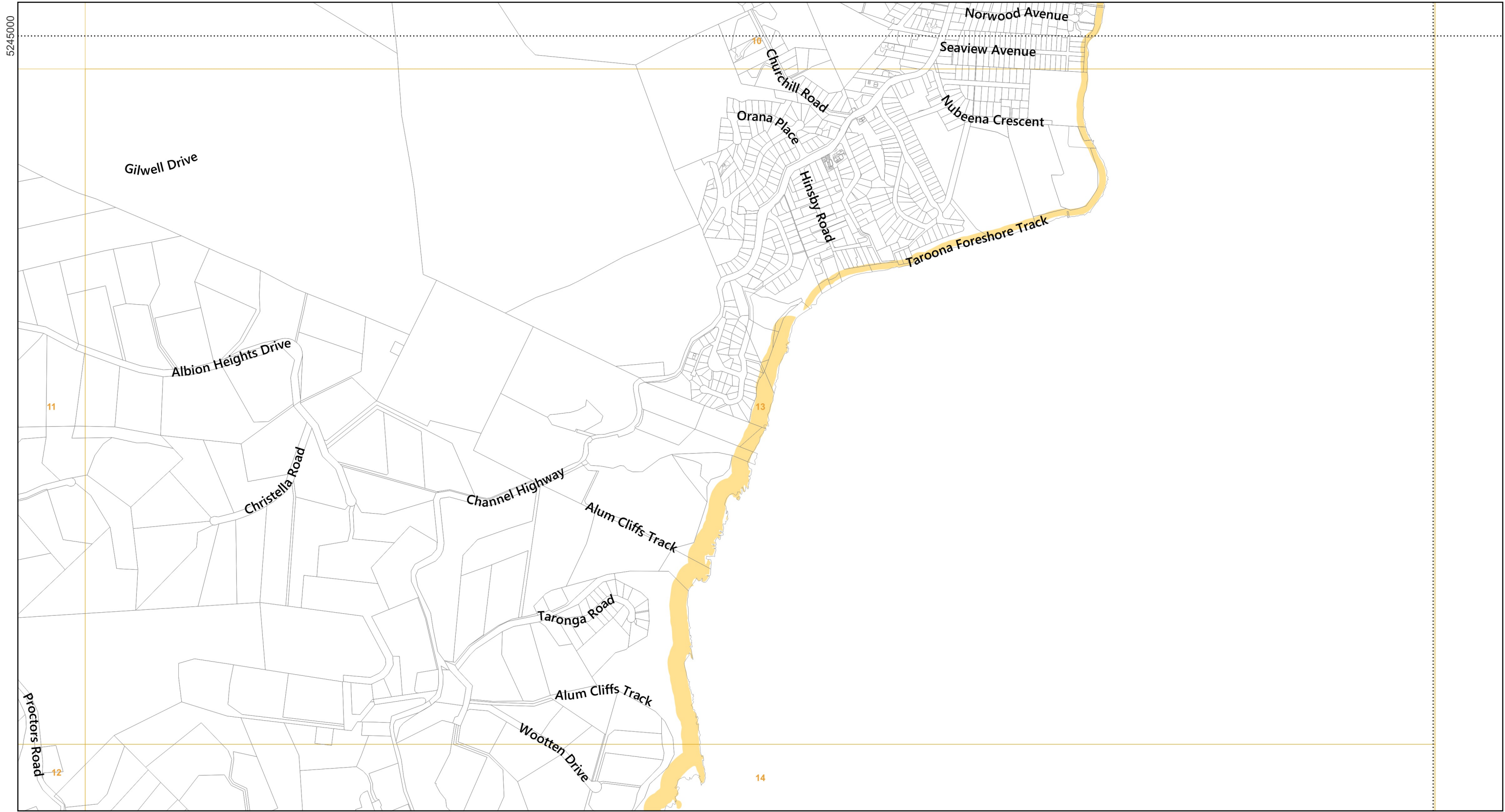
Coastal Erosion Hazard Code	Land parcels
Coastal erosion investigation area	LGA Boundary
Low coastal erosion hazard	
Medium coastal erosion hazard	
High coastal erosion hazard	

Map 12 of 37

0 100 200 300 400 500 m

Scale: 1:11000 when printed at A3
 Coordinate system: GDA94 MGA Zone 55
 Planning data from Kingborough Council
 Base topographic data from the LIST © State of Tasmania
 Print Date: 6.9.2024 Cadastre Date: 20.8.2024



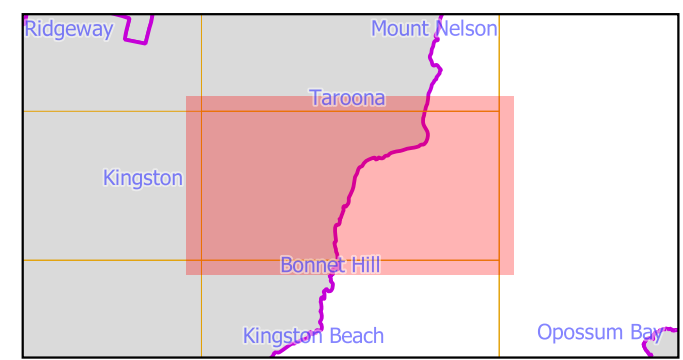


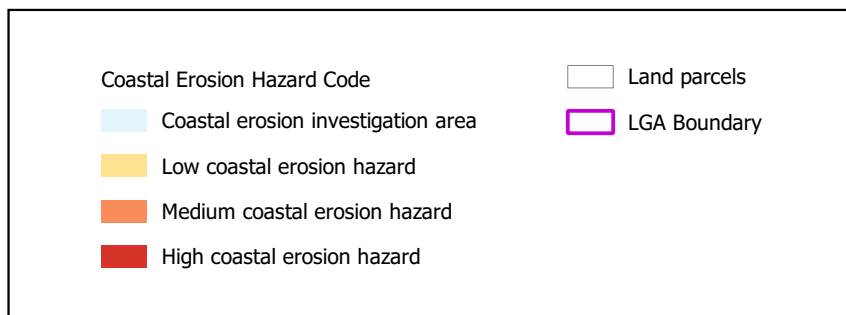
Coastal Erosion Hazard Code	Land parcels
Coastal erosion investigation area	LGA Boundary
Low coastal erosion hazard	
Medium coastal erosion hazard	
High coastal erosion hazard	

Map 13 of 37

0 100 200 300 400 500 m

Scale: 1:11000 when printed at A3
 Coordinate system: GDA94 MGA Zone 55
 Planning data from Kingborough Council
 Base topographic data from the LIST © State of Tasmania
 Print Date: 6.9.2024 Cadastre Date: 20.8.2024

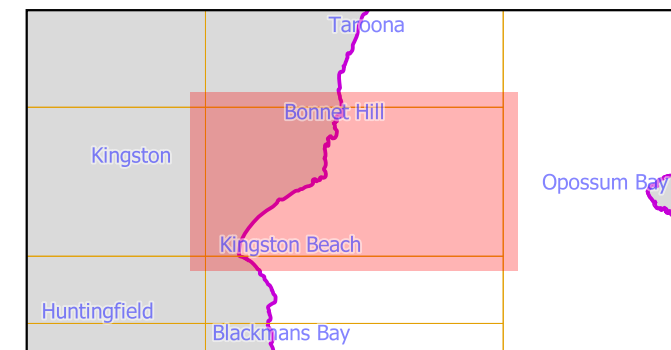


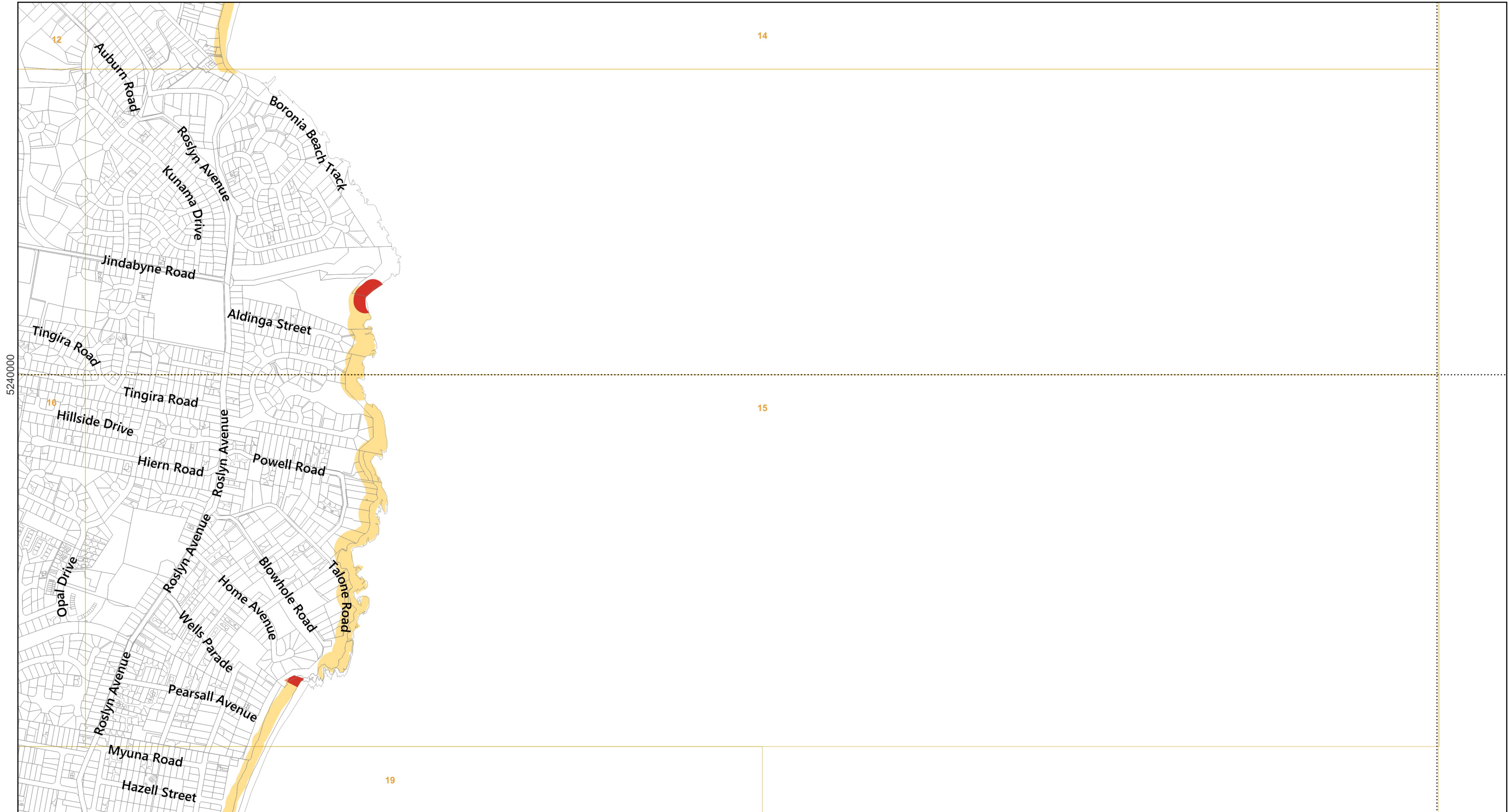


Map 14 of 37

0 100 200 300 400 500 m

Scale: 1:11000 when printed at A3
 Coordinate system: GDA94 MGA Zone 55
 Planning data from Kingborough Council
 Base topographic data from the LIST © State of Tasmania
 Print Date: 6.9.2024 Cadastre Date: 20.8.2024



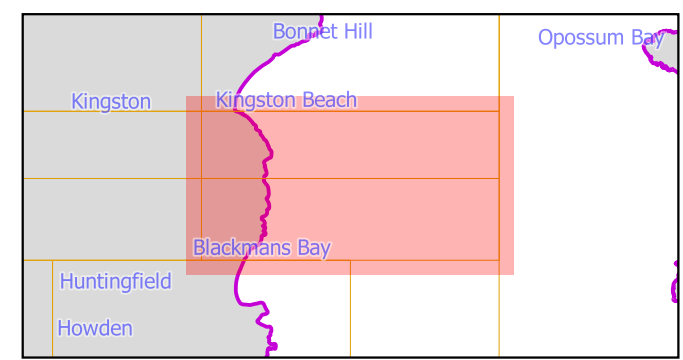


Coastal Erosion Hazard Code	Land parcels
Coastal erosion investigation area	LGA Boundary
Low coastal erosion hazard	
Medium coastal erosion hazard	
High coastal erosion hazard	

Map 15 of 37

0 100 200 300 400 500 m

Scale: 1:11000 when printed at A3
 Coordinate system: GDA94 MGA Zone 55
 Planning data from Kingborough Council
 Base topographic data from the LIST © State of Tasmania
 Print Date: 6.9.2024 Cadastre Date: 20.8.2024



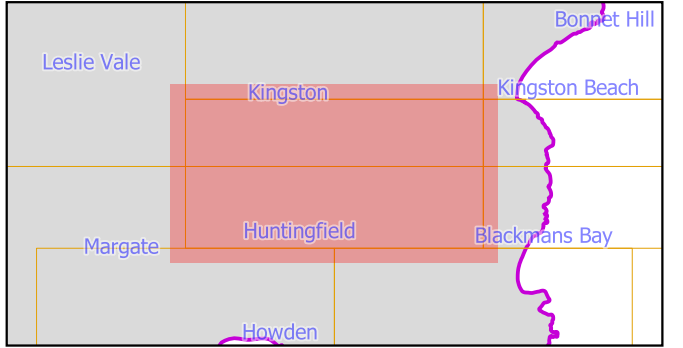


Coastal Erosion Hazard Code	Land parcels
Coastal erosion investigation area	LGA Boundary
Low coastal erosion hazard	
Medium coastal erosion hazard	
High coastal erosion hazard	

Map 16 of 37

0 100 200 300 400 500 m

Scale: 1:11000 when printed at A3
 Coordinate system: GDA94 MGA Zone 55
 Planning data from Kingborough Council
 Base topographic data from the LIST © State of Tasmania
 Print Date: 6.9.2024 Cadastre Date: 20.8.2024



520000



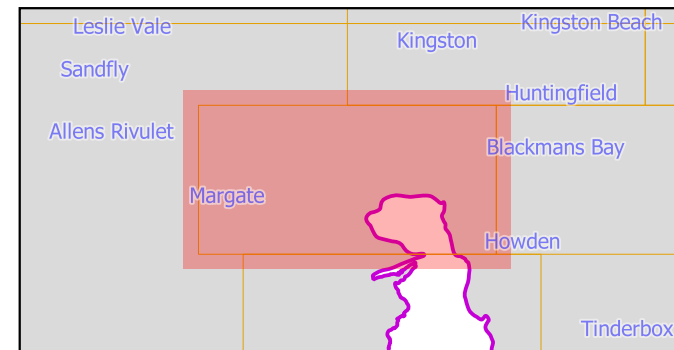
520000

Coastal Erosion Hazard Code	Land parcels
Coastal erosion investigation area	LGA Boundary
Low coastal erosion hazard	
Medium coastal erosion hazard	
High coastal erosion hazard	

Map 17 of 37

0 100 200 300 400 500 m

Scale: 1:11000 when printed at A3
 Coordinate system: GDA94 MGA Zone 55
 Planning data from Kingborough Council
 Base topographic data from the LIST © State of Tasmania
 Print Date: 6.9.2024 Cadastre Date: 20.8.2024





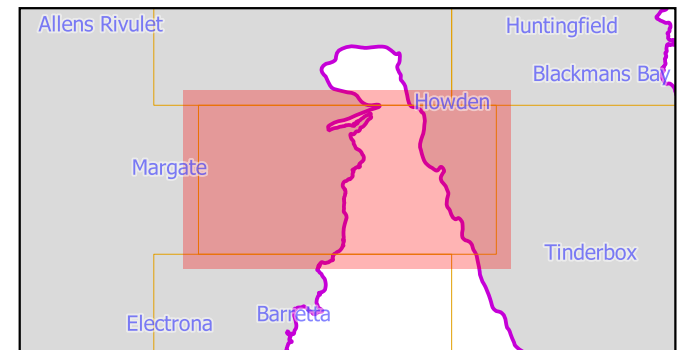
Coastal Erosion Hazard Code	Land parcels
Coastal erosion investigation area	LGA Boundary
Low coastal erosion hazard	
Medium coastal erosion hazard	
High coastal erosion hazard	

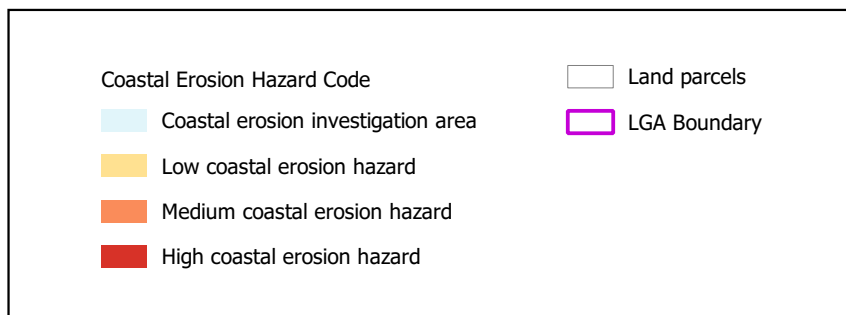
Map 18 of 37

0 100 200 300 400 500 m



Scale: 1:11000 when printed at A3
 Coordinate system: GDA94 MGA Zone 55
 Planning data from Kingborough Council
 Base topographic data from the LIST © State of Tasmania
 Print Date: 6.9.2024 Cadastre Date: 20.8.2024

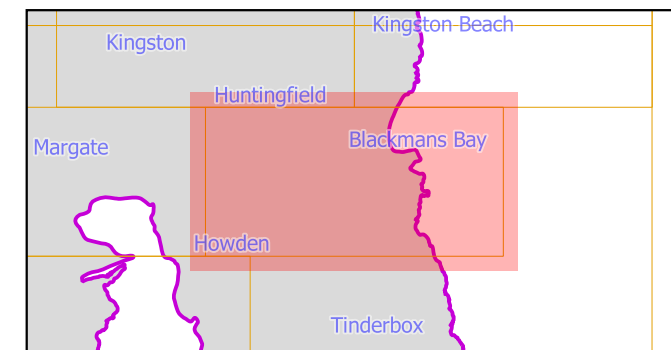




Map 19 of 37

0 100 200 300 400 500 m

Scale: 1:11000 when printed at A3
 Coordinate system: GDA94 MGA Zone 55
 Planning data from Kingborough Council
 Base topographic data from the LIST © State of Tasmania
 Print Date: 6.9.2024 Cadastre Date: 20.8.2024



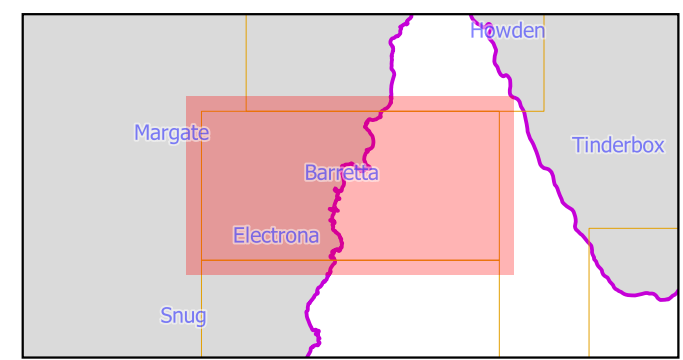


Coastal Erosion Hazard Code	Land parcels
Coastal erosion investigation area	LGA Boundary
Low coastal erosion hazard	
Medium coastal erosion hazard	
High coastal erosion hazard	

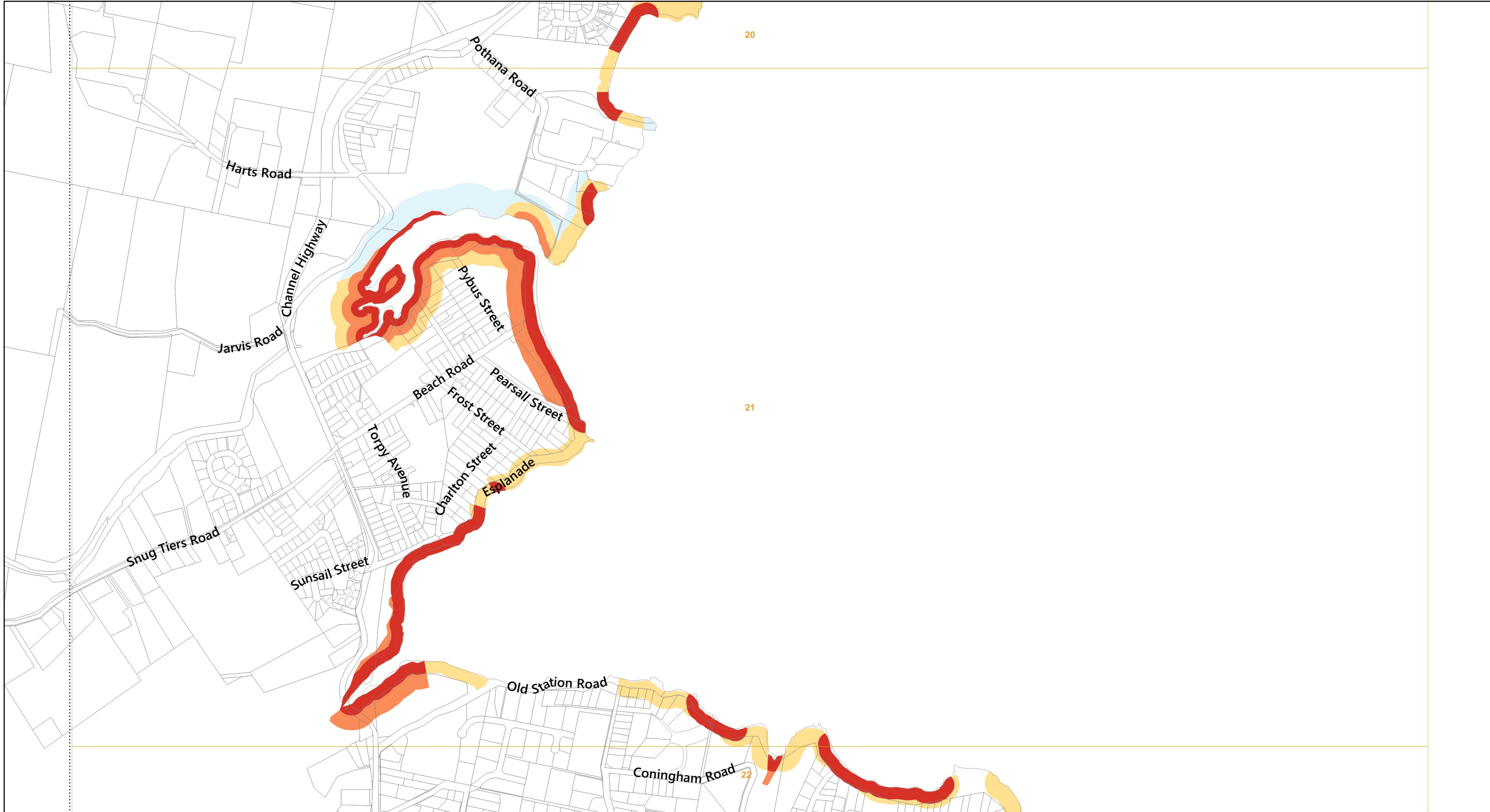
Map 20 of 37

0 100 200 300 400 500 m

Scale: 1:11000 when printed at A3
 Coordinate system: GDA94 MGA Zone 55
 Planning data from Kingborough Council
 Base topographic data from the LIST © State of Tasmania
 Print Date: 6.9.2024 Cadastre Date: 20.8.2024



520000



520000

Coastal Erosion Hazard Code

- Coastal erosion investigation area
- Low coastal erosion hazard
- Medium coastal erosion hazard
- High coastal erosion hazard

- Land parcels
- LGA Boundary

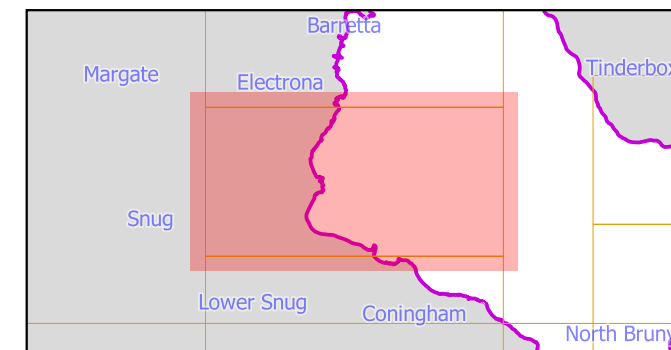
Map 21 of 37



0 100 200 300 400 500 m



Scale: 1:11000 when printed at A3
 Coordinate system: GDA94 MGA Zone 55
 Planning data from Kingborough Council
 Base topographic data from the LIST © State of Tasmania
 Print Date: 6.9.2024 Cadastre Date: 20.8.2024



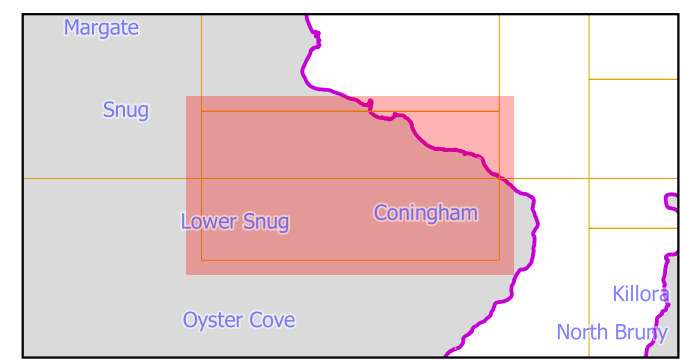


Coastal Erosion Hazard Code		Land parcels
	Coastal erosion investigation area	
	Low coastal erosion hazard	LGA Boundary
	Medium coastal erosion hazard	
	High coastal erosion hazard	

Map 22 of 37

0 100 200 300 400 500 m

Scale: 1:11000 when printed at A3
 Coordinate system: GDA94 MGA Zone 55
 Planning data from Kingborough Council
 Base topographic data from the LIST © State of Tasmania
 Print Date: 6.9.2024 Cadastre Date: 20.8.2024





5225000

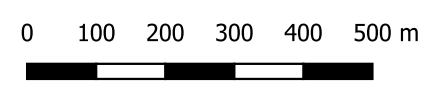
5225000

520000

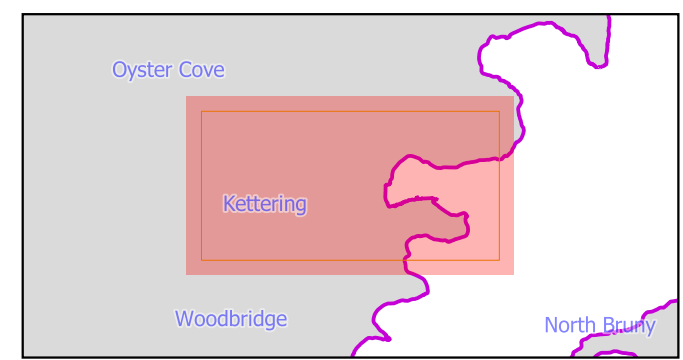
520000

Map 23 of 37

- | | |
|------------------------------------|--------------|
| Coastal Erosion Hazard Code | Land parcels |
| Coastal erosion investigation area | LGA Boundary |
| Low coastal erosion hazard | |
| Medium coastal erosion hazard | |
| High coastal erosion hazard | |



Scale: 1:11000 when printed at A3
 Coordinate system: GDA94 MGA Zone 55
 Planning data from Kingborough Council
 Base topographic data from the LIST © State of Tasmania
 Print Date: 6.9.2024 Cadastre Date: 20.8.2024

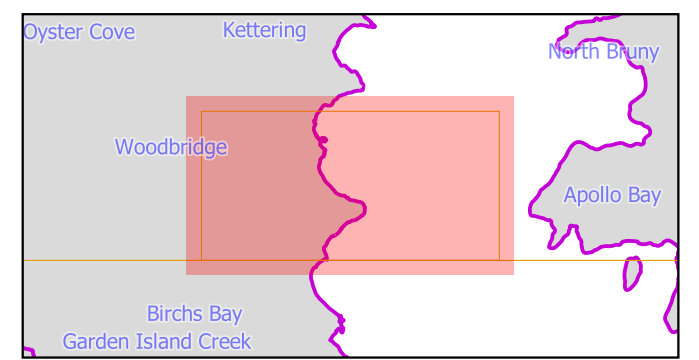




Coastal Erosion Hazard Code	Land parcels
Coastal erosion investigation area	LGA Boundary
Low coastal erosion hazard	
Medium coastal erosion hazard	
High coastal erosion hazard	

Map 24 of 37

Scale: 1:11000 when printed at A3
 Coordinate system: GDA94 MGA Zone 55
 Planning data from Kingborough Council
 Base topographic data from the LIST © State of Tasmania
 Print Date: 6.9.2024 Cadastre Date: 20.8.2024



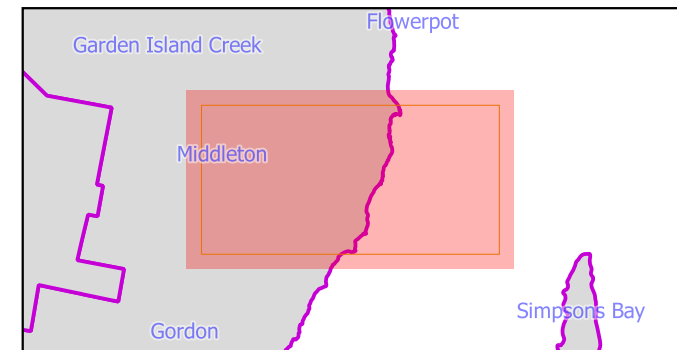


Coastal Erosion Hazard Code	Land parcels
Coastal erosion investigation area	LGA Boundary
Low coastal erosion hazard	
Medium coastal erosion hazard	
High coastal erosion hazard	

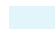





Map 25 of 37

0 100 200 300 400 500 m

Scale: 1:11000 when printed at A3
 Coordinate system: GDA94 MGA Zone 55
 Planning data from Kingborough Council
 Base topographic data from the LIST © State of Tasmania
 Print Date: 6.9.2024 Cadastre Date: 20.8.2024







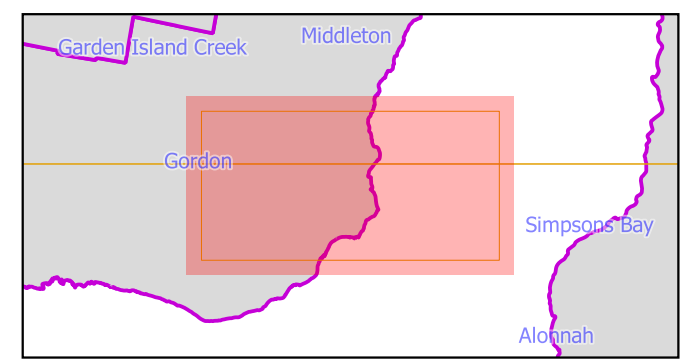
Coastal Erosion Hazard Code	
 Coastal erosion investigation area	 Land parcels
 Low coastal erosion hazard	 LGA Boundary
 Medium coastal erosion hazard	
 High coastal erosion hazard	

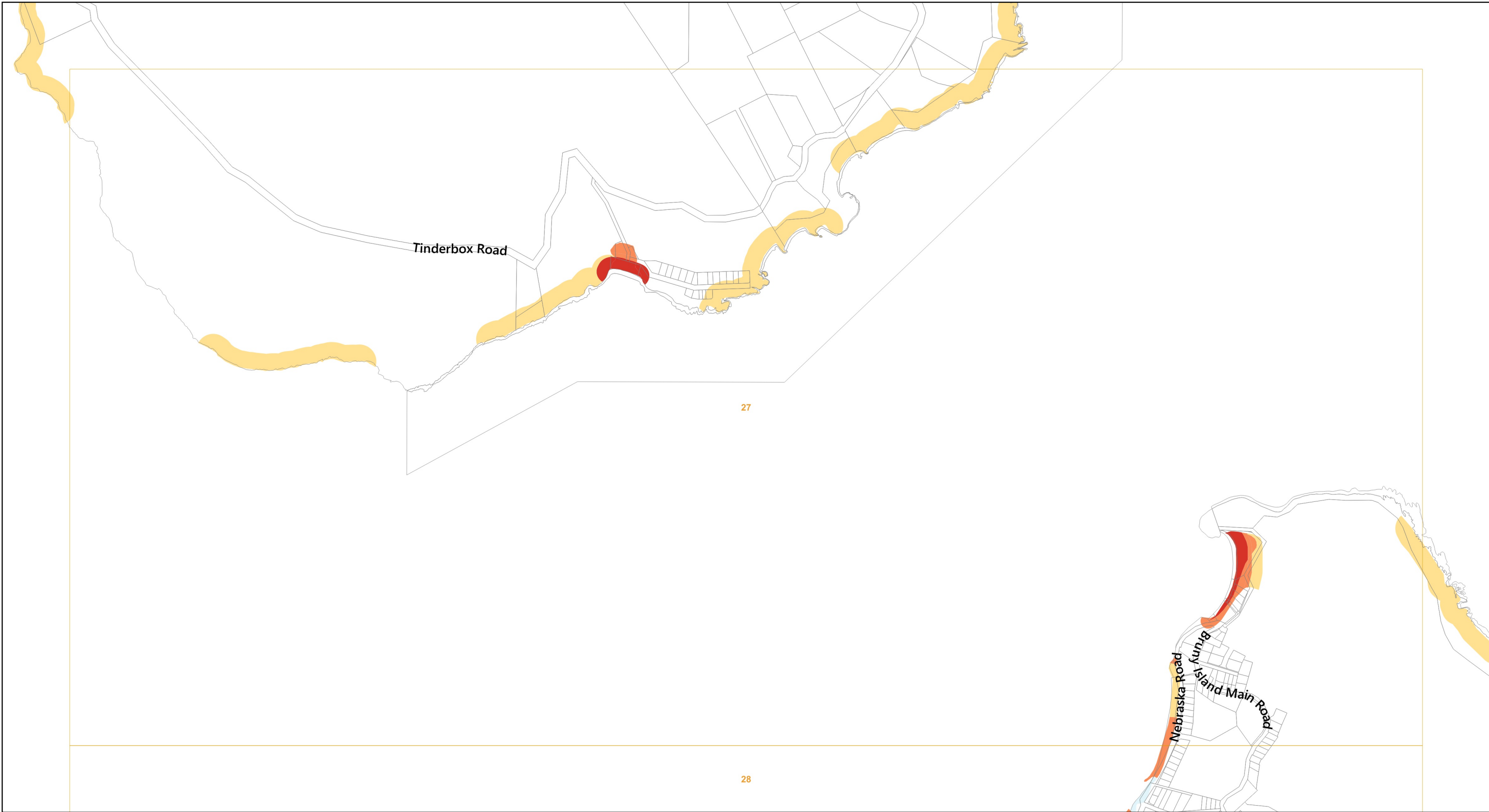
Map 26 of 37

0 100 200 300 400 500 m

Scale: 1:11000 when printed at A3
 Coordinate system: GDA94 MGA Zone 55
 Planning data from Kingborough Council
 Base topographic data from the LIST © State of Tasmania
 Print Date: 6.9.2024 Cadastre Date: 20.8.2024



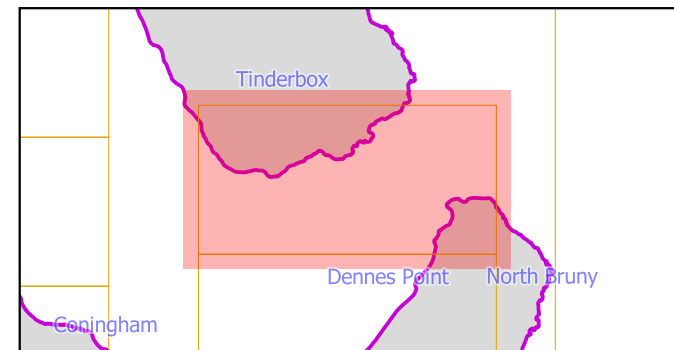


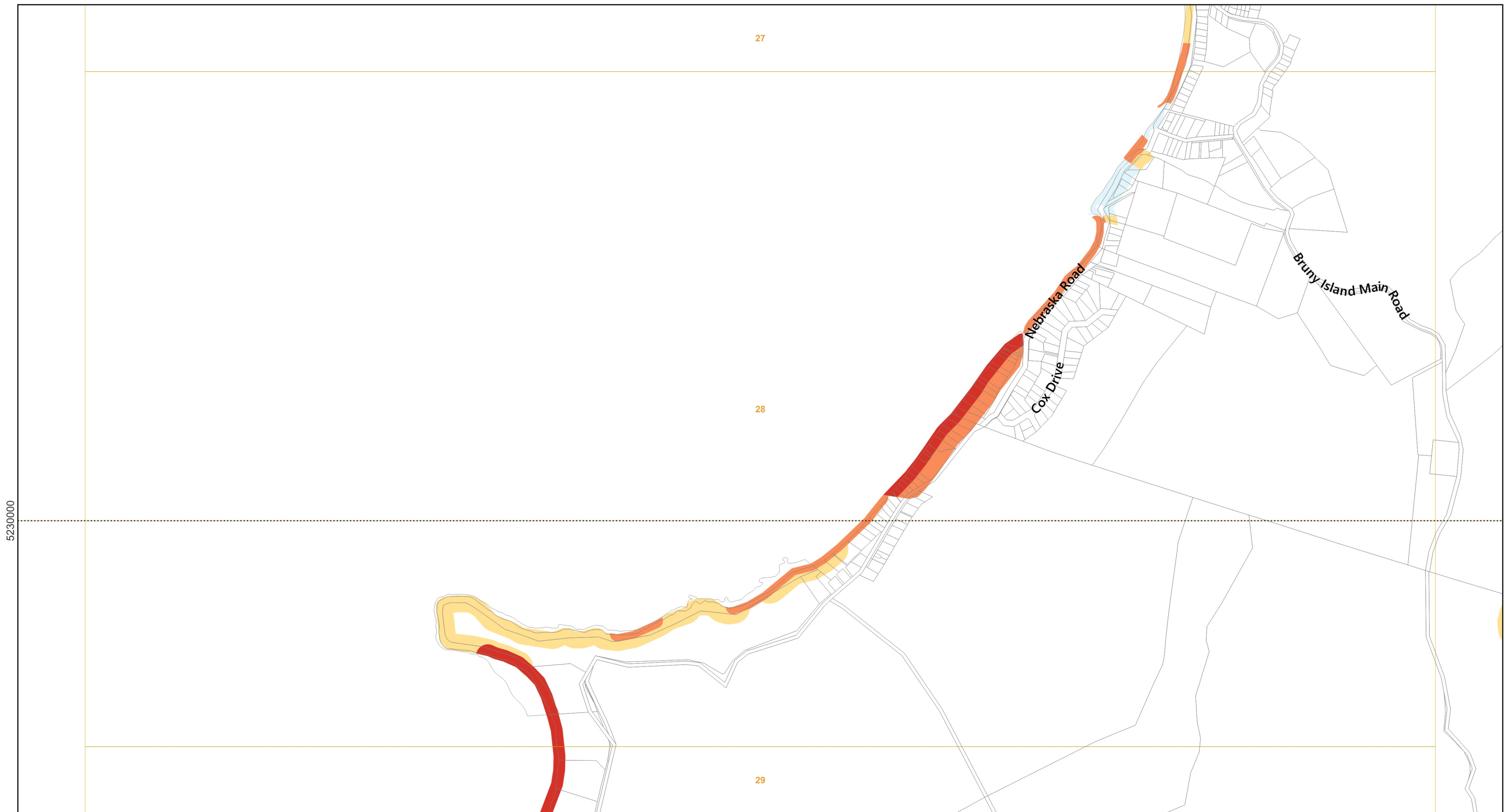
Coastal Erosion Hazard Code	Land parcels
Coastal erosion investigation area	LGA Boundary
Low coastal erosion hazard	
Medium coastal erosion hazard	
High coastal erosion hazard	

Map 27 of 37

0 100 200 300 400 500 m

Scale: 1:11000 when printed at A3
 Coordinate system: GDA94 MGA Zone 55
 Planning data from Kingborough Council
 Base topographic data from the LIST © State of Tasmania
 Print Date: 6.9.2024 Cadastre Date: 20.8.2024





5230000

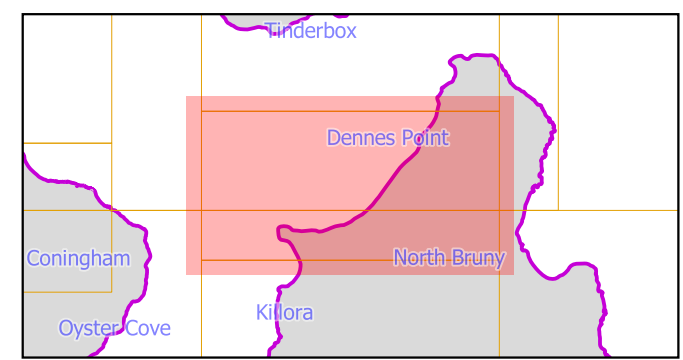
5230000

Coastal Erosion Hazard Code	Land parcels
Coastal erosion investigation area	LGA Boundary
Low coastal erosion hazard	
Medium coastal erosion hazard	
High coastal erosion hazard	

Map 28 of 37

0 100 200 300 400 500 m

Scale: 1:11000 when printed at A3
 Coordinate system: GDA94 MGA Zone 55
 Planning data from Kingborough Council
 Base topographic data from the LIST © State of Tasmania
 Print Date: 6.9.2024 Cadastre Date: 20.8.2024



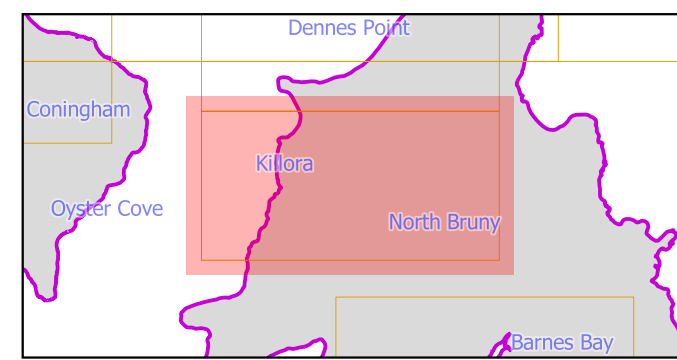


Coastal Erosion Hazard Code		Land parcels
	Coastal erosion investigation area	
	Low coastal erosion hazard	LGA Boundary
	Medium coastal erosion hazard	
	High coastal erosion hazard	

Map 29 of 37

0 100 200 300 400 500 m

Scale: 1:11000 when printed at A3
 Coordinate system: GDA94 MGA Zone 55
 Planning data from Kingborough Council
 Base topographic data from the LIST © State of Tasmania
 Print Date: 6.9.2024 Cadastre Date: 20.8.2024



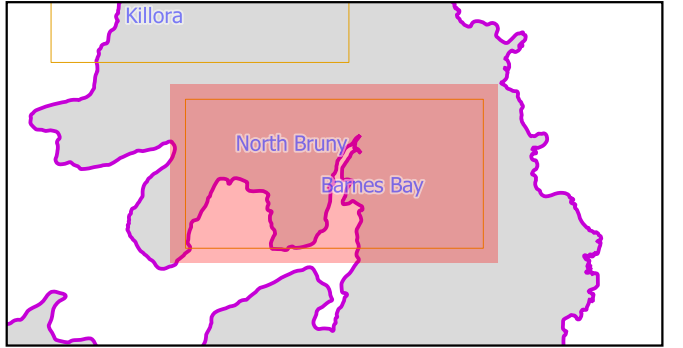


Coastal Erosion Hazard Code		Land parcels
	Coastal erosion investigation area	
	Low coastal erosion hazard	LGA Boundary
	Medium coastal erosion hazard	
	High coastal erosion hazard	

Map 30 of 37

0 100 200 300 400 500 m

Scale: 1:11000 when printed at A3
 Coordinate system: GDA94 MGA Zone 55
 Planning data from Kingborough Council
 Base topographic data from the LIST © State of Tasmania
 Print Date: 6.9.2024 Cadastre Date: 20.8.2024



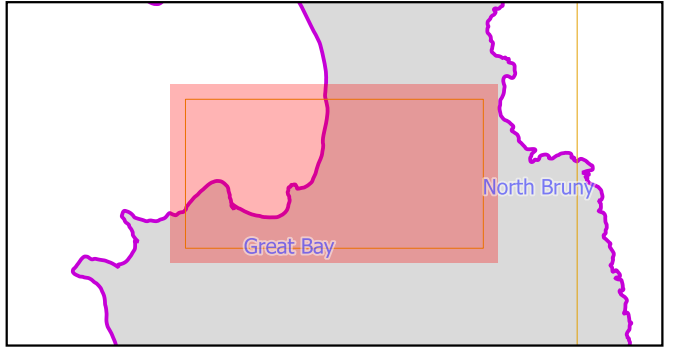


Coastal Erosion Hazard Code	
	Coastal erosion investigation area
	Low coastal erosion hazard
	Medium coastal erosion hazard
	High coastal erosion hazard
	Land parcels
	LGA Boundary

Map 31 of 37

0 100 200 300 400 500 m

Scale: 1:11000 when printed at A3
 Coordinate system: GDA94 MGA Zone 55
 Planning data from Kingborough Council
 Base topographic data from the LIST © State of Tasmania
 Print Date: 6.9.2024 Cadastre Date: 20.8.2024





Coastal Erosion Hazard Code	Land parcels
Coastal erosion investigation area	LGA Boundary
Low coastal erosion hazard	
Medium coastal erosion hazard	
High coastal erosion hazard	

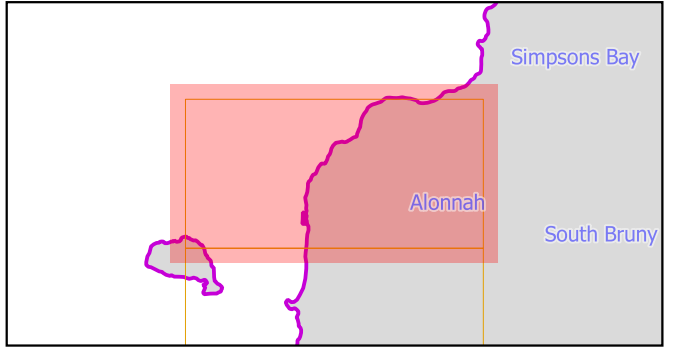
Map 32 of 37

N

0 100 200 300 400 500 m

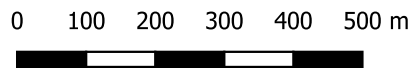
KINGBOROUGH COUNCIL

Scale: 1:11000 when printed at A3
 Coordinate system: GDA94 MGA Zone 55
 Planning data from Kingborough Council
 Base topographic data from the LIST © State of Tasmania
 Print Date: 6.9.2024 Cadastre Date: 20.8.2024



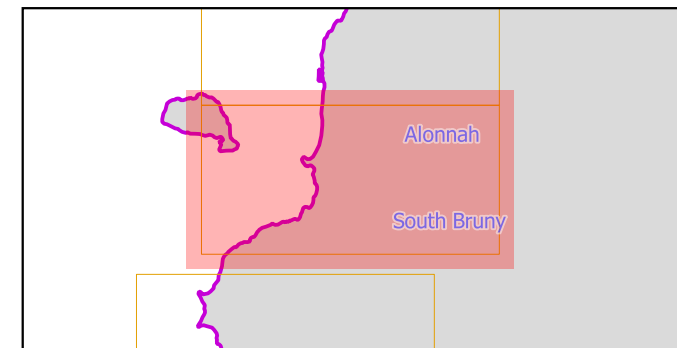


Map 33 of 37



Scale: 1:11000 when printed at A3
 Coordinate system: GDA94 MGA Zone 55
 Planning data from Kingborough Council
 Base topographic data from the LIST © State of Tasmania
 Print Date: 6.9.2024 Cadastre Date: 20.8.2024

Coastal Erosion Hazard Code	Land parcels
Coastal erosion investigation area	LGA Boundary
Low coastal erosion hazard	
Medium coastal erosion hazard	
High coastal erosion hazard	



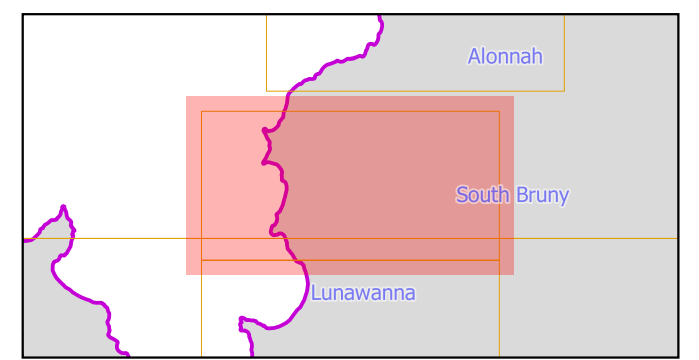


Coastal Erosion Hazard Code	Land parcels
Coastal erosion investigation area	LGA Boundary
Low coastal erosion hazard	
Medium coastal erosion hazard	
High coastal erosion hazard	

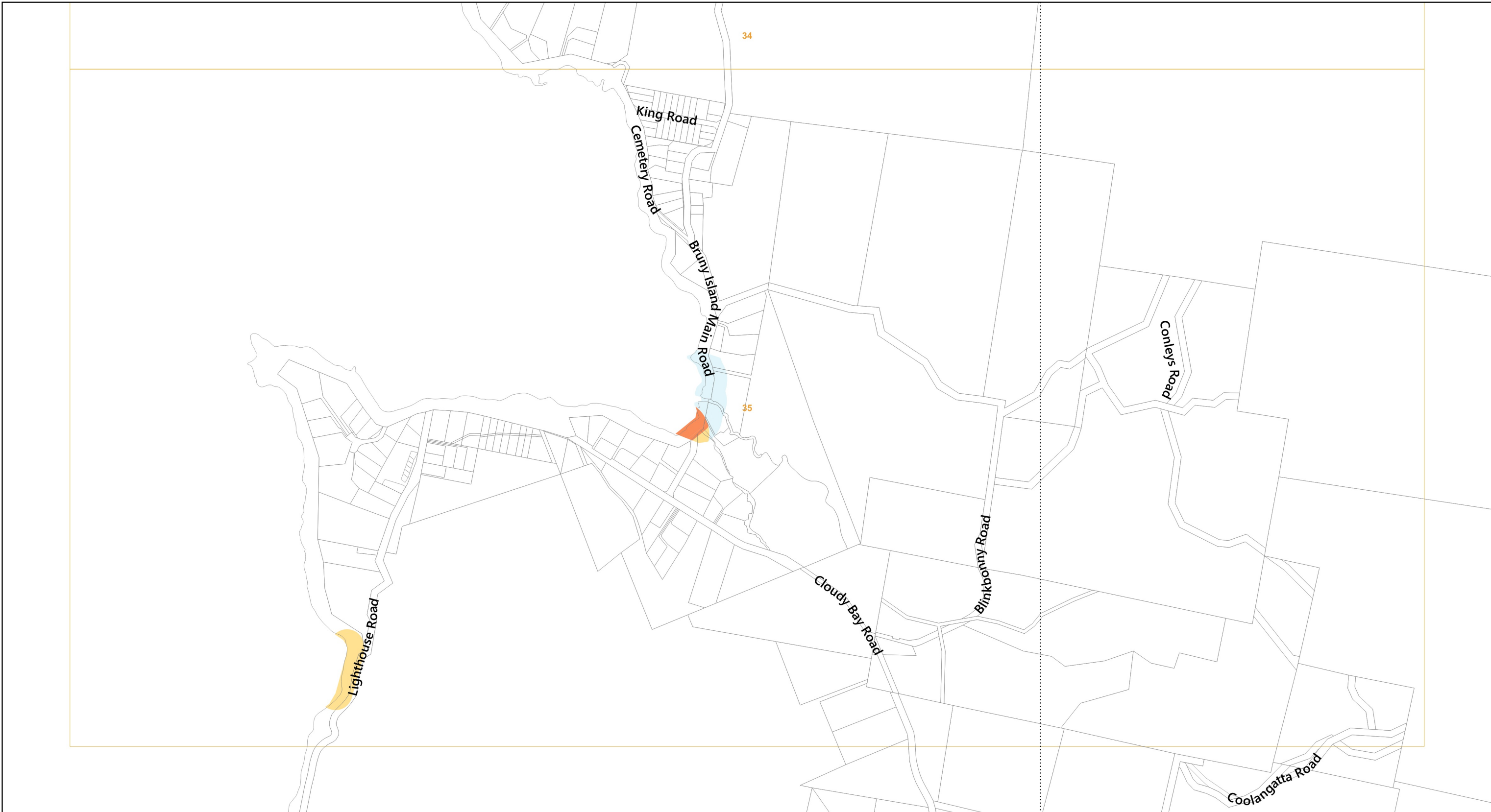
Map 34 of 37

0 100 200 300 400 500 m

Scale: 1:11000 when printed at A3
 Coordinate system: GDA94 MGA Zone 55
 Planning data from Kingborough Council
 Base topographic data from the LIST © State of Tasmania
 Print Date: 6.9.2024 Cadastre Date: 20.8.2024

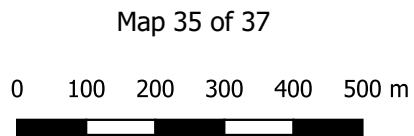


520000

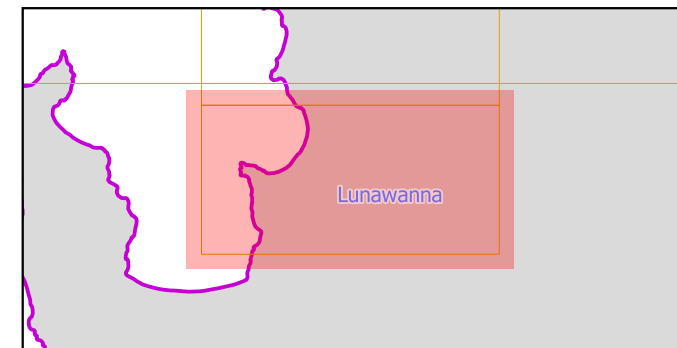


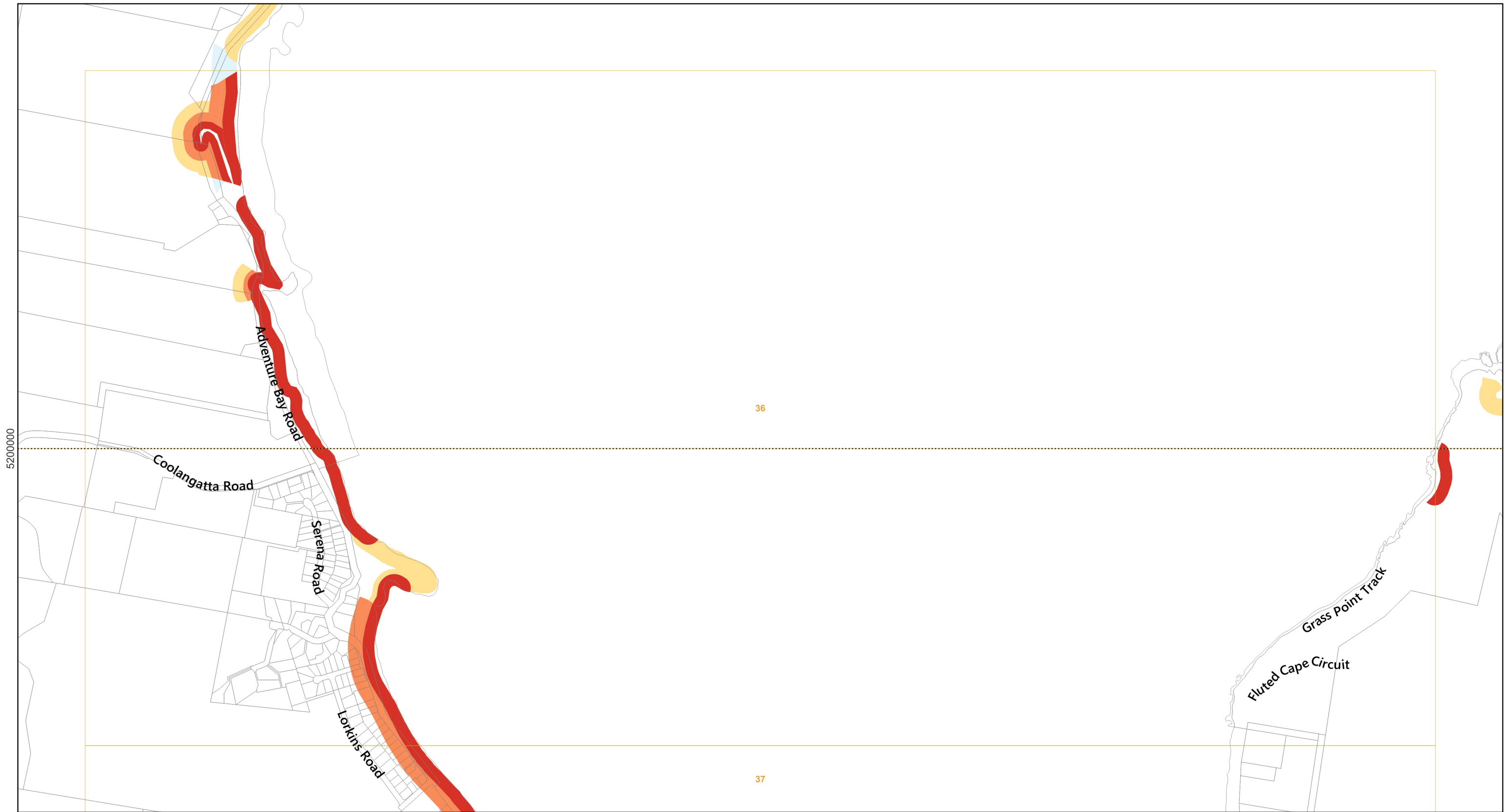
520000

- | | |
|------------------------------------|--------------|
| Coastal Erosion Hazard Code | Land parcels |
| Coastal erosion investigation area | LGA Boundary |
| Low coastal erosion hazard | |
| Medium coastal erosion hazard | |
| High coastal erosion hazard | |



Scale: 1:11000 when printed at A3
 Coordinate system: GDA94 MGA Zone 55
 Planning data from Kingborough Council
 Base topographic data from the LIST © State of Tasmania
 Print Date: 6.9.2024 Cadastre Date: 20.8.2024



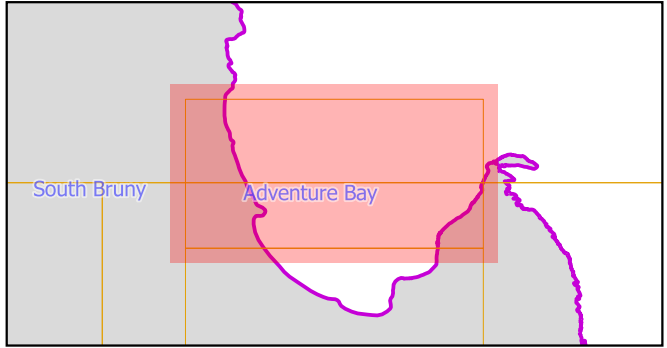


Coastal Erosion Hazard Code		Land parcels
	Coastal erosion investigation area	
	Low coastal erosion hazard	LGA Boundary
	Medium coastal erosion hazard	
	High coastal erosion hazard	

Map 36 of 37

0 100 200 300 400 500 m

Scale: 1:11000 when printed at A3
 Coordinate system: GDA94 MGA Zone 55
 Planning data from Kingborough Council
 Base topographic data from the LIST © State of Tasmania
 Print Date: 6.9.2024 Cadastre Date: 20.8.2024





36

37

Coastal Erosion Hazard Code	
Coastal erosion investigation area	Land parcels
Low coastal erosion hazard	LGA Boundary
Medium coastal erosion hazard	
High coastal erosion hazard	

Map 37 of 37

0 100 200 300 400 500 m

Scale: 1:11000 when printed at A3
 Coordinate system: GDA94 MGA Zone 55
 Planning data from Kingborough Council
 Base topographic data from the LIST © State of Tasmania
 Print Date: 6.9.2024 Cadastre Date: 20.8.2024

