



ADDITIONAL EQUIPMENT

Gallery walls (includes hanging equipment)	\$ 57 per set of 10
Stage	\$ 57 per 2 sections
Lectern with mics	\$ 112.00
Roving mics with stands	\$ 89.00



(03) 6211 8160



communityhub@kingborough.tas.gov.au



KINGBOROUGH COMMUNITY HUB
7 Goshawk Way, Kingston, 7050

Kingborough
Community Hub



**Auditorium, Longley Gallery
& Town Square**
Information Guide

Kingborough

KINGBOROUGH
COMMUNITY HUB



The Auditorium is the largest of the Community Hub spaces providing an indoor space suitable for displays, presentations, performances, workshops, exhibitions, trade shows and film nights. The space has integrated audio/visual technology.

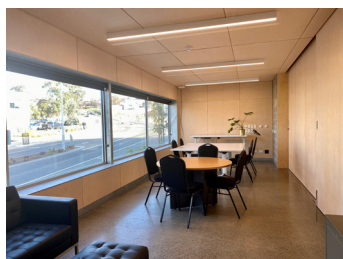
SUITABLE FOR: Meetings, conferences, markets, exhibitions, concerts, trade shows, group fitness classes, film nights.

FEATURES: Kitchen, flexible floor plan, audio/visual technology, staging, tables and chairs.

SIZE: 18.5m x 14.9m

FLOOR SURFACE: Polished concrete

APPROXIMATE CAPACITY: Maximum 275 | Seated (theatre) 185
Standing 275 | Seated (tables) 130



LONGLEY GALLERY

The Longley Gallery is a comfortable and smaller space that is available during office hours. It is suitable for meetings and training sessions.

SIZE: 9.3m x 3.2m
CAPACITY: 14

FEE STRUCTURE

	Not for profit, Educational, Community	Commercial, Corporate, Government, Private
Per hour	\$ 52.00	\$ 104.00
Half-day (5 hours) (8am - 1pm, 1pm - 6pm, 6pm - 11pm)	\$ 207.00	\$ 414.00
Day (10 hours) (8am - 6pm, 1pm - 11pm)	\$ 415.00	\$ 830.00
Full-day (15 hours) (8am - 11pm)	\$ 624.00	\$ 1248.00
Full week (7 days)	\$ 2181.00	\$ 4362.00
Community market activities (8am - 6pm)	\$ 276.00	\$ 552.00
Kitchen	\$ 57.00	\$ 57.00
Set up and pull down fee	\$ 208.00	\$ 208.00
Cleaning charge	\$ 57.00	\$ 57.00
Heating	\$ 68.00	\$ 68.00
Projector and screen	\$ 112.00	\$ 112.00
Possible after hours surcharge	\$ 57.00	\$ 57.00

TOWN SQUARE CAPACITY: 650

Adjacent to the Auditorium is the Town Square. The two spaces are separated by a bi-fold drop down wall. This wall, when raised, allows both spaces to be used as one. 5-tonne rigging points have been installed along the roof area above the Town Square, providing the ability to fly production equipment.

